



# American Recycler

\$7.00

NewsVoice of Salvage, Waste and Recycling

AmericanRecycler.com

## FOCUS: C & D Planning for deconstruction



### WHAT'S INSIDE

- AF&PA releases November paper reports for U.S. Page A9
- Bridgestone opens facility to make giant tires. Page A11
- Steel import market share 30 percent. Page A14
- Insurance Auto Auctions supports Ohio legislation to modernize vehicle sales laws. Page A16
- Construction firms add 48,000 jobs in December. Page B2

Events Calendar..... 4  
 Scrap Metals MarketWatch..... 15  
 Industry Profile..... 10  
 Salvaging Millions..... 16  
 New Product Showcase..... 20  
 AR Classifieds..... 20  
 Equipment Spotlight..... B4

PRSR STD  
 U.S. Postage  
**PAID**  
 Columbia, MO  
 Permit No. 353

02.2015

CHANGE SERVICE REQUESTED



900 W. South Boundary, Bldg. 6  
Perrysburg, OH 43051-5235

# Solar energy on landfills and brownfields continues growth

by MIKE BRESLIN

*mbreslin@americanrecycler.com*

Solar energy generation on closed landfills and brownfields has experienced significant growth over the past few years. In the not too distant past, putting a photovoltaics (PV) project on a landfill was considered a novelty and was difficult to finance.

But things have changed. Overall, the U.S. installed 1,354 megawatts of solar PV in Q3 2014, up 41 percent over the same period last year. These numbers come from the latest edition of GTM Research and the Solar Energy Industries Association's (SEIA) U.S. Solar Market Insight Report. According to the report, Q3 was the nation's second largest quarter ever for PV installations and brings the country's cumulative PV capacity to 16.1 gigawatts with another 1.4 gigawatts of concentrating solar power capacity.

Solar is proving to be an important and growing source of new generating capacity. Through the first three quarters of the year, solar represents 36 percent of new capacity to come on line, up from 29 percent in 2013 and 9.6 percent in 2012.

"Solar's continued, impressive growth is due, in large part, to smart and effective public policies, such as the solar Investment Tax Credit (ITC), Net Energy Metering (NEM) and Renewable Portfolio Standards (RPS)," said Rhone Resch,



This solar project was constructed atop the Massachusetts town of Scituate's capped landfill, converting a dormant property into a valuable asset. When combined with the wind turbine output, the town will use 100 percent renewable energy to power all of the town's municipal facilities.

PHOTO COURTESY OF BRIGHTFIELDS DEVELOPMENT, LLC

SEIA president and chief executive officer.

Cory Honeyman, GTM Research's solar analyst said, "Over the past two years, solar project development on converted landfills, brownfields and other contaminated sites has become a growing driver of demand in the commercial and small utility scale solar markets across the U.S."

"For a long time, developing solar projects on formerly contaminated sites simply did not make sense given the slew of legal, contractual and construction challenges that made financing such projects cost prohibitive. But recent efforts

by the EPA to incentivize and fast track approvals of solar projects on contaminated lands have played a pivotal role in streamlining development of landfill and brownfield solar projects.

"With that in mind, the U.S. solar market has seen more than 120 megawatts of solar installations come online over the past 24 months on formerly contaminated sites. Massachusetts followed by New Jersey, are leading the charge with attractive incentive programs that target landfill and brownfield redevelopment via solar."

An indication of the interest in developing these kind of solar projects are the industry conferences sponsored by Electric Utility Consulting Inc. (EUCI). EUCI is a provider of conferences, seminars, workshops and courses designed exclusively for the energy industry.

Chris Lane, associate program director at EUCI explained why the seminars were established. "As you may know there have been a good number of developments of renewable energy projects on landfills and brownfields on the east coast in New Jersey, New York and especially

in Massachusetts because of the incentives to do so. This December was the second time we ran the Solar Development on Landfills and Brownfields Conference. It was first run last year in Philadelphia. We made the decision to site it in Chicago this time because we feel there are also a lot of brownfield and landfill opportunities in the Midwest. We wanted to export some of the knowledge that we gained from previous developments back east, because you need public policy assistance with these kinds of projects. When the towns and the states are behind these programs they just go better and smoother."

The EUCI conferences were attended by attorneys, developers, solar cell and component suppliers, finance people, electric providers and representatives from the Department of Energy and the National Renewable Energy Laboratory.

"The general consensus of the problems facing development were finding a landfill that has been closed long enough so that settling is not a huge issue," Lane continued. "The siting and permitting are

See SOLAR POWER, Page 4



Concrete is poured in-place in plastic tubs to create ballasts to anchor solar racking and panels while minimizing the impact on landfill caps and speeding installation.

PHOTO COURTESY OF GAMECHANGE RACKING SYSTEM

**TOUGHER • STRONGER • BUILT TO LAST**

**Model**  
**5**

# **E-Z LOG BALER**

Here it is! The perfect baler for ANY salvage yard, scrap yard or parts yard in the industry. The all new Model 5 E-Z Log Baler offers more versatility to process cars, or scrap all with one machine. Yet it has a price tag that even a start-up company can budget for!

With zero set up time, pull into any yard and start turning those autos or scrap into operating revenue!



- Cycles in under 3 minutes!
- Produces up to 100 tons per day.
  - Fully portable.
- Many options now standard!



800-328-3613 | 320-274-3594 | Fax: 320-274-3859

EZCrusher.com | davev@ezcrusher.com

R.M. Johnson Co. Annandale, Minnesota

# ISRI Transportation Safety Awards entry period now open

The Institute of Scrap Recycling Industries (ISRI) has opened the entry period for this year's Transportation Safety Awards. The program, now in its third year, features four awards recognizing outstanding safety records: the Best Fleet Awards, Pacesetter Awards, the Driver of the Year Award and the ISRI Golden Wrench Award.

The Best Fleet Awards will be presented to the ISRI member with both the lowest vehicle accident rate and the lowest DOT severity rate for the calendar year 2014 in each of four classes, determined by size. The Pacesetter Awards will be granted to the ISRI member with the best 36 month accident record in each of 4 classes, determined by size.

The Driver of the Year Award will be awarded to the commercial vehicle driver with the best 20 year driving record, with the minimum qualification being no at-fault accidents during the driver's career. The winner will receive \$500, a trophy and leather jacket, and a trip to ISRI2015.

The ISRI Golden Wrench Award will be given to the best heavy vehicle maintenance technician or manager who exhibits outstanding efforts, achievements, and contributions to ensure that commercial vehicles are safe on the road. The winner will receive a trophy and a trip to the ISRI2015.

Entry forms and additional information can be found online. All entries are due March 6, 2015.

# Cox Enterprises removes five tons of trash from rivers and shorelines

Through national partnerships with American Rivers and Ocean Conservancy, Cox Enterprises removed nearly five tons of materials from rivers and shorelines across the nation this year. Nearly 700 Cox employees and their family members volunteered at cleanups in Atlanta, Georgia; Dayton, Ohio; Jacksonville, Florida; Miami, Florida; Orange County, California; Orlando, Florida; Seattle, Washington and Wantagh, New York.



Nearly 700 Cox volunteers participated in cleanups with American Rivers and Ocean Conservancy.

The cleanups are part of Cox Conserves, the company's national sustainability program, and included employees from Cox Enterprises and each of its major subsidiaries.

Cox Enterprises' participating companies included:

- Atlanta: AutoTrader.com, Ch. 2 WSB-TV, Cox Communications, Cox Enterprises, Cox Media Group, Manheim and The Atlanta Journal-Constitution.
- Dayton: 95.3 and 101.1 The Eagle, Ch. 7 WHIO-TV, Dayton Daily News, Manheim Cincinnati, Journal-News, K99.1, News Talk Radio WHIO and Springfield News-Sun.
- Jacksonville: 95.1 The Big Ape, 96.9 The Eagle, CBS 47, FOX 30, Manheim Jacksonville, News Talk WOKV and X102.9.
- Miami: AutoTrader.com, 99 Jamz, Easy 93.1, Hits 97.3, Hot 105, Party 93.1, Manheim Ft. Lauderdale and Kelley Blue Book.
- Orange County: AutoTrader.com, Cox Communications, Kelley Blue Book and Manheim Riverside and Manheim Southern California.
- Orlando: 98.9 WMMO, AutoTrader.com, Ch. 9 WFTV-TV, K92.3, Manheim Central Florida, News 96.5, Power 95.3, Star 94.5 and WRDQ 27.
- Seattle: AutoTrader.com, Ch. 7 KIRO-TV, Cox Reps and Manheim Seattle.
- Wantagh: 102.3 WBAB, 106.1 BLI and Cox Reps.

# NH the Beautiful awards grant to the town of Meredith



Pictured left to right: Barry Weeks, Meredith solid waste coordinator; Larry Melanson, NH the Beautiful; Mike Faller, Meredith public works director; Marilyn Weir, Northeast Resource Recovery Association.

The Town of Meredith, New Hampshire was awarded \$2,160 to assist with the purchase of two shipping containers used for storage at the facility. The storage containers provide the storage capacity to allow the transfer station to accumulate a large enough load of recycled materials to get a higher market value based on the quantity.

The award was presented to Mike Faller and Barry Weeks by John Dumais of NH Grocers Association/NH the Beautiful and Larry Melanson of Coca Cola Co./NH the Beautiful. Marilyn Weir of Northeast Resource Recovery Association was also present. NH the

Beautiful applauds the Town of Meredith for continuing to improve the efficiency of its recycling program.

NH the Beautiful, Inc. is a private non-profit charitable trust founded in 1983 and supported by the soft drink, malt beverage, and grocery industries of New Hampshire. By offering municipal recycling grants of over \$2.5 million and signs, anti-litter programs and technical assistance to recycling programs, NHtB is a unique organization that represents a voluntarily-funded alternative to expensive legislation intended to achieve the same end results.

**19,500 lbs./120 CA, exhaust brake, power windows/locks, power/heated mirrors, tilt/cruise, 40/20/40 split bench seat, keyless entry, touch-screen AM/FM/CD player w/steering wheel audio controls, 4-position OEM switch panel, 22 gal. mid-ship fuel tank, tubular cab steps, fog lamps, tow hooks, 4.88 limited slip rear axle, aluminum wheels, galvanized sub-frame, keyslot package, upper and lower work lights--call for details!**

Hydraulic brake/spring ride, SLT - loaded GVWR - new - call for exact, tires new on 19.5" aluminum, Vulcan body/19.5" steel/steel tube Removable Rails Wheel lift/L-arms: 3,000 lbs./Vulcan scoops, PTO: hot shift, federal signal Legend LPX 14-head LED with S/T/T, work lights, pylon: standard steel, tool box: 48" all stainless steel w/galvanized mounting brackets, accessories: galvanized sub-frame.

Engine/transmission: Hino J08E-VC - 220 horsepower/Allison 2200RDS automatic - 6 Speed, air brake/air ride, interior loaded, GVWR/cab to axle: 25,500 lbs./144 CA, make/body/rails: Vulcan/21.5" steel LCG/steel tube removable rails wheel lift/L-arms : 3,500 lbs./Standard, PTO: hot shift, light bar: federal signal legend LPX 14-Head LED with S/T/T & work lights.

Exhaust brake, power windows/locks, power/heated mirrors, tilt/telescoping wheel, cruise control, CD player, air ride drivers seat, cold weather package includes block heater and air dryer, chrome package - includes chrome bumper, grille & mirrors, 50 gal. aluminum fuel tank, stainless steel simulators, key slot package, upper/lower LED work lights, chain package, call for details!



**2015 DODGE 5500 SLT!**

ALL CHASSIS AND BODY MAKES AND MODELS AVAILABLE, INCLUDING INDUSTRIAL CHASSIS AND BODIES

**888-538-0800 / www.lynchtruckcenter.com**



**2015 HINO 258ALP!**



**LYNCH Towing & Recovery**

29000 Sharon Lane Waterford, WI 53185

# AWS

**American Weigh Scales, Inc.  
Norcross, GA**



**Legal For Trade  
NTEP SCALES**

Use Promo Code AGRI for a special discount!



**770-542-0230 | mail@awscales.com**

**Office hours: M-F, 9am - 6pm EST**

**www.scales.net**

# Solar power

■Continued from Page 1

always a challenge and making sure you have a buyer for the generated electricity. Policies play into that. Some places, especially on the east coast, have figured out that it's the best of both worlds. They have sites that are unusable and need distributed generation. So it's a happy marriage of two policy things they want to happen. And, power in the Northeast is quite expensive. This is a way to add power at a reasonable price point. We're starting to see some of that in the Midwest, but they are kind of just waking up to it," Lane concluded.

Other factors have helped spur the development of solar projects on landfills and brownfields. Over the past few years the costs of PV solar panels have dropped dramatically. They're now about half the price they were in 2008, and about 100 times lower than in 1977. There have also been significant developments in solar installation technology. They run the gamut from flexible, geomembrane solar PV covers like the one pioneered by Republic Services at the Tessman Road Landfill in San Antonio, Texas to new pour-in-place concrete ballasts to hold solar racks and panels. A wide variety of panel mounting systems are now available to suit various geographical situations.

Introduced a little over a year ago, the Gamechange Racking Pour-in-Place System has become a leading choice because of its lighter impact on landfill caps. Teresa Zhao, marketing manager for Gamechange detailed the benefits of the system. "Pre-cast ballasts can weigh over 2,000 lbs. If you use pre-cast ballasts, you have to lift these heavy and

bulky slabs and transport them over the Landfill cap using heavy equipment, and you endanger the cap. They are also hard to level in place, requiring significantly higher labor costs.

"We use plastic forms which are very light. They're 20" wide and come in 6' or 12' lengths. Unlike precast ballasts which are provided in only one size, the heights of the plastic forms varies from 10 to 20" to match the localized ballast requirements. We obtain requirements from highly sophisticated wind tunnel testing which puts the heavier ballast on the edges where it belongs and allows for lighter ballast in the center of the arrays to substantially reduce total cap loading as well as minimize concrete cost. Concrete trucks can be positioned off the landfill and concrete pumped by hose into the tubs, or delivered in batches by lighter weight equipment such as Bobcats using standard concrete pouring buckets. We also provide our proprietary galvanized steel support and aluminum rail racking system which is embedded in the concrete to mount the solar panels. Cabling can either be surface mounted or trenched. A lot of people are not only using our system for landfills, but also for rocky sites where it is difficult to penetrate the surface. We are working with a lot of customers on large scale projects," said Zhao.

Jim Falsetti is a director at BQ Energy, which bills itself as the world's leader in renewable energy projects on brownfields and landfills. The company only does brownfields and landfills and has installed or has under advanced development approximately 100 megawatts of solar power.

"When we did the Greenfields Massachusetts Solar Landfill Project in

2011, it was a system using pre-cast concrete ballasts placed on top of the landfill," said Falsetti. "Since they were heavy blocks we had to use trucks and heavy equipment to move them up on top of the landfill which limited some of the application. The newer pour-in-place ballasts allow us to travel on the landfills with very small vehicles which place very low pressure rating on the cap.

"Brownfields have been our area of expertise since the founding of BQ Energy in 2002. In 2006 we handled the Steel Winds Project, a 35 megawatt wind installation on a 1,200 acre closed superfund site in Lackawanna, New York. With brownfields, you are limited as to what you can do. Usually the properties are not suitable for food production and are usually located in industrial zones not suitable for residential housing. Sometimes there are contaminants and you have to be careful when you site equipment. From wind we evolved into solar energy. Solar sits on top of the surface so there's no, or very limited ground penetration such as occasionally trenching to bury electric cables running to the switch gear.

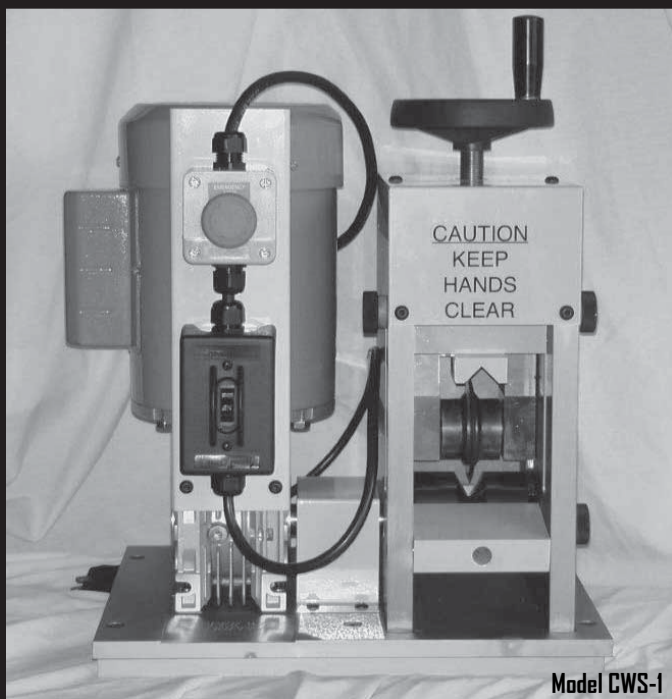
"From what I know, in Massachusetts, New York and New Jersey the growth has been very good. Two years ago we did not have any of that. In the permitting process, I would say there's more of a familiarity to what we are trying to do by the regulatory agencies. As they become familiar with what we do, the process goes smoother and quicker.

"If it makes sense in the Northeast, it makes sense in other places. By putting solar on landfills, we are not taking productive land out of use, but rather dedicating it to solar energy. We are targeting closed landfills of a certain vintage, usually 15 to 20 years after closure. In the Northeast, it takes about six acres of cleared landfill or brownfield to build about 1 megawatt of solar generation. We try to look for relatively level land. For society as a whole, I think it's a good idea. As the word spreads, I think

See SOLAR POWER, Page 6

## Copper Wire Stripper

- Double your value on scrap copper wire ▪ Made in Canada
- Strips 120 ft per minute ▪ Self-feeding ▪ Industrial machine



Model CWS-1

888-419-3555 ▪ [www.copperwirestripper.com](http://www.copperwirestripper.com)

## Events Calendar

### February 25th-26th

**Association of Postconsumer Plastic Recyclers Membership Meeting.** Hyatt Regency, Dallas, Texas. 202-316-3046 • [www.plasticsrecycling.org](http://www.plasticsrecycling.org)

### March 8th-12th

**28th Annual Southeast Recycling Conference & Tradeshow.** Hilton Sandestin Beach Golf Resort & Spa, Destin, Florida. 800-441-7949 • [www.southeastrecycling.com](http://www.southeastrecycling.com)

### March 16th-18th

**Platts Scrap Seminar and Steel Markets North American Conference.** The Ritz Carlton, Chicago, Illinois. 781-430-2100 • [www.platts.com](http://www.platts.com)

### March 23rd-27th

**NPE 2015 International Plastics Exposition.** Orange County Convention Center, Orlando, Florida. 202-974-5235 • [www.npe.org](http://www.npe.org)

### March 29th-31st

**C&D World.** New Music Center, Nashville, Tennessee. 630-585-7530 • [www.cdrecycling.org](http://www.cdrecycling.org)

### April 7th-8th

**NERC Spring Workshop.** Chase Center, Wilmington, Delaware. 802-254-3636 • [www.nerc.org](http://www.nerc.org)

**American Recycler**

NewsVoice of Salvage, Waste and Recycling

877-777-0043 Fax 419-931-0740

#### Publisher and Editor

**ESTHER G. FOURNIER**  
news@AmericanRecycler.com

#### Editorial Focus Section Editor, Production and Layout

**DAVID FOURNIER, JR.**  
david@AmericanRecycler.com

#### Production and Layout

**MARY E. HILL**  
mary@AmericanRecycler.com

#### Marketing Representatives

**MARY M. COX**  
maryc@AmericanRecycler.com

**MARY E. HILL**  
mary@AmericanRecycler.com

#### Circulation Manager

**DONNA L. MCMANUS**  
donna@AmericanRecycler.com

#### Writers and Contributors

**MIKE BRESLIN**  
mbreslin@AmericanRecycler.com

**DONNA CURRIE**  
dcurrie@AmericanRecycler.com

**MARK HENRICKS**  
mhennicks@AmericanRecycler.com

**RON STURGEON**  
rons@rdsinvestments.com

#### Production Offices

900 W South Boundary, Bldg 6  
Perrysburg, OH 43551-5235  
877-777-0043 fax 419-931-0740  
[www.AmericanRecycler.com](http://www.AmericanRecycler.com)

American Recycler is published 12 times per year, postage paid at Columbia, Missouri.

SUBSCRIPTIONS: Call our offices at 877-777-0043 or visit [www.AmericanRecycler.com](http://www.AmericanRecycler.com). US 1 year \$48; 2 years \$72.

© COPYRIGHT 2015 by American Recycler News, Inc. All rights are strictly reserved and reproduction in whole or in part is prohibited without prior written permission from the publisher.

Submission of articles, artwork and all photography must be accompanied by a self-addressed stamped envelope if a return of materials is wanted. Byline contributors' views should not be construed as representing the opinion of the publisher.

American Recycler reserves the right to edit any and all material submitted for publication. All Letters to the Editor must be signed and include a telephone number for verification. The editor of this publication does not accept responsibility for statements made by advertisers herein.



PRINTED ON  
RECYCLED PAPER

## Recycling grants awarded in NJ

New Jersey's municipalities will receive more than \$15 million in state recycling grants to help implement and enhance local recycling efforts, Department of Environmental Protection (DEP) commissioner Bob Martin said.

The funds, based on 2012 recycling data, are being awarded through the state's Recycling Enhancement Act.

The recycling grant program is funded by a \$3 per ton surcharge on trash disposed of at solid waste facilities across the state. Distribution of grants is based on the recycling successes local governments demonstrated in 2012.

In 2012, New Jersey generated more than 10.2 million tons of municipal solid waste (MSW), more commonly known as trash or garbage, which is generated from homes, schools, hospitals and businesses. The DEP documented the recycling of more than 4.4 million tons of recyclable municipal wastes such as glass, aluminum and other metals, and paper.

This resulted in a MSW recycling rate of 44 percent, an increase of 4 percent from 2011. By comparison, the national MSW recycling rate in 2012 was 34.5 percent, according to the U.S. Environmental Protection Agency.

Overall, nearly 20.2 million tons of solid waste (including construction debris and other types of non-MSW waste) were generated in New Jersey in 2012, of which 11 million tons were recycled. The overall waste generated and amount of materials recycled were impacted significantly by debris generated by Superstorm Sandy.

"We still have the goal of achieving 50 percent municipal recycling in New Jersey and we would like to see our overall recycling rate grow beyond 60 percent and stay there," said DEP assistant commissioner for environmental management Jane Herndon. "We're pleased this grant program serves as an incentive to help boost recycling throughout the state."

"The grants can help municipalities in many ways. They can purchase the best and biggest recycling containers with these funds, educate residents and businesses about the benefits of recycling, and help local governments support recycling staff," added Herndon.

For a complete list of recycling grants by municipality, view this article on [www.americanrecycler.com](http://www.americanrecycler.com).

### Moving Soon?



To ensure you continue receiving your copy of American Recycler, please notify us as soon as you have your new address!

Send changes to [donna@americanrecycler.com](mailto:donna@americanrecycler.com).



# THIS IS HOW IT ALL STACKS UP

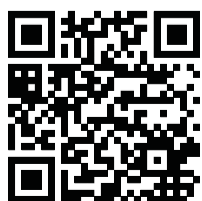


**REB-1**



**REB-2**

## The Most Productive, Energy Efficient Two-Ram Balers In The World



# SIERRA

Ph. 661-327-7073 | USA. 800-343-8503 | [www.sierraintl.com](http://www.sierraintl.com)

# Solar power

■Continued from Page 4

you'll see more and more municipalities and private developers looking at these lands that have limited uses, embracing the idea of solar and making good use of those properties."

We also interviewed Pete Pedersen, Managing Principal at Brightfields Development LLC, which develops solar brownfield and landfill properties for corporations, municipal governments, electric utilities and renewable energy investors. Over the past 3 years, Brightfields has built or has under development approximately 75 megawatts of solar.

"We've had a long-term brownfield redevelopment program called Renova Partners. More recently, in 2009, we created Brightfields to do solar. We deliberately segregated the economics and liability implications of solar projects from any environmental taint, largely because in 2009 and 2010 solar on landfills was new and everyone was trying to find a comfort level.

"We've seen good growth in the solar area, generally. I think it's a manifestation of the fact that there's a growing sense of comfort by the financial community that these projects do not pose undue risk. In other words, whether its geotechnical or environmental issues associated with a landfill or brownfield, they are manageable risks that don't influence the development or implementation of a successful solar project. These projects stand the test of time.

"Support from state and local renewable energy agencies has been good. It's been great from authorities at the state and federal environmental level. Overall, for



A two megawatt solar installation at a former town landfill in West Nyack, New York.

PHOTO COURTESY OF GAMECHANGE RACKING SYSTEM

solar on landfills, the environmental officials have been terrific in a number of states, whether in Massachusetts, Connecticut, New York, or others. And the energy authorities, of course, are enthusiastic in general about solar.

"In 2011 and 2012 we began to see the overall exploding growth of solar. In Massachusetts, for example, there's a clear policy tilt in favor of reusing dormant land like closed landfills or brownfield sites instead of developing greenfield land. From a geotechnical or loading perspective, solar arrays are relatively light and don't negatively impact a brownfield where there may be some nasty waste underneath a regulated cap. Landfills are designed not to be fragile, but if you apply too much load, the land starts settling and shifting, especially in a freeze environment like the Northeast. Overall, solar on landfills started to really gallop in 2013 and 2014.

"In the Northeast, buildable land is scarce and costly. In our experience, all the policy folks unanimously recognize that solar on landfills and brownfields is a great use of dormant land. So I would expect that certainly through the end of 2016 there will likely be a frenzy to

develop solar on these properties. That's when the Federal Investment Tax Credit which applies to all states goes from 30 percent to 10 percent. That, of course, may continue at that time, hopefully.

"Different states are at different levels of maturation and comfort with this. In the case of landfills for example, we've had great a great experience with the Massachusetts DEP. Their landfill reuse permit process is very professional. They ask tough, complete questions and the process moves along in good time. Some other states have very good intentions, but have less experience and their approval processes may be less fluid. These are all things that are likely to work themselves out. It's getting the structured finance people comfortable the way they are comfortable with the kinds of projects that have been around for decades. With landfills and brownfields there are things that pop up that just don't fit squarely into the average project financier's wish list.

"There are many different solar installation and racking solutions depending on the geotechnical nature of the landfill or brownfield. There is growing recognition that the less

weighty solar systems, the lighter approaches, which have more of an ability to adapt to minor sloping are preferable to the heavier-ballasted mounted racks. But there are many situations where ballasted mounted racks are the best match. There's a lot more focus on the cost of racking systems, inverters and transformers, plus how racking systems affect the cost of labor," Pedersen said.

The number of U.S. landfills has decreased from almost 8,000 in 1988 to fewer than 2,000 today. And, the Government Accountability Office (GAO) estimates that there are as many as 425,000 brownfields throughout the U.S. Some estimates show that there are 5 million acres of abandoned industrial sites in our nation's cities, which can range in size from an abandoned gas station to a superfund site. That means there are countless sites ripe for solar development. As government officials at all levels and the financial community begin to fully recognize the compatibility of difficult to develop land with the value of renewable energy, this nascent trend is likely to continue.

## MINING FOR GOLD IS NOT FOR THE FAINT OF HEART

But you didn't get into the e-scrap business because it was easy. Or a sure thing.

This is where the tools you use are critical and your shredding system can make all the difference between striking it rich and busting.

We listen to your needs and consider the unique challenges of e-scrap processing as we help you develop the best possible solution for your business.

For an introduction to how we approach e-scrap mining, watch our overview video at [go.ssiworld.com/escrap](http://go.ssiworld.com/escrap)

Of course, we always start with that first critical question...

**WHAT NEEDS SHREDDING?®**

**SSI Shredding Systems, Inc.**

[www.ssiworld.com](http://www.ssiworld.com) | [sales@ssiworld.com](mailto:sales@ssiworld.com) | +1-503-682-3633 See every imaginable thing being shredded at [www.watchitshred.com](http://www.watchitshred.com)





titanium  
copper  
stainless steel  
inconel  
lead

Over 2.3 Billion Lbs of Scrap...



...have been sold on this website.

cupro nickel  
aluminum  
light & heavy steel  
e-scrap  
mixed metals

[www.GovLiquidation.com](http://www.GovLiquidation.com)

**Government  
Liquidation**  
A LIQUIDITY SERVICES MARKETPLACE

# FEWER FINES = MORE PROFITS



Process copper, aluminum, magnesium, and other non-ferrous metals with minimum fines.

Our machines handle:

- Sheet • Extrusions • Wire & Cable
- Forgings & Castings

**Why your next scrap metal recycling system should include a Saturn®.**



Saturn Hybrid-Drive Shredders (single/dual/quad)



Saturn Grizzly Super 80 Granulator

Learn more about these reliable systems for non-ferrous metal scrap recycling.

Call Granutech-Saturn Systems today or visit us online:

866-247-9036  
granutech.com



## ELECTRONICS

# Dell receives Keep America Beautiful Vision for America Award

Keep America Beautiful (KAB) honored Michael Dell and Dell Inc. with the 2014 Vision for America Award.

Michael Dell, founder, chairman and chief executive officer of Dell, personally accept the Vision for America Award.

Dell's "Powering the Possible" commitment – to put technology and expertise to work where it can do the most good in the world – created a launch point for Dell's 2020 Legacy of Good Plan, which outlines 21 ambitious social and sustainability goals to reach by 2020. The goals include making the company's product portfolio 80 percent more energy efficient; making its packaging 100 percent waste-free; using 50 million pounds of recycled-content plastics in its products; and volunteering 5 million cumulative hours in the communities Dell calls home.

Keep America Beautiful cited several specific corporate efforts that led to this national recognition:

- All Dell products and solutions are designed with the environment in mind and without sacrificing performance or reliability. In FY14, Dell used more than 10 million pounds of post-consumer recycled plastics in its products.

- Dell was the first company to offer free consumer recycling of its products,

and the first to use certified closed-loop recycled plastics in its PCs. It is also leading the way in its use of alternative energy sources; 21 Dell facilities today buy 100 percent of their energy from renewables.

- Dell is committed to minimizing the impact of its operations and those of its supply chain. In 2013, through more efficient fulfillment and increased purchases of renewable electricity, Dell reduced GHG emissions from facilities and logistics by 8 percent – it would take planting 1.9 million trees to absorb that much carbon.

- Dell has also reduced the energy intensity of its product portfolio by 23.2 percent over the last two years. For example, customers who purchased products in FY14 can expect to spend \$449 million less on electricity to power their products over their lifetime, compared to those purchased in 2012.

- Dell has partnered with Goodwill in more than 2,000 locations across the U.S. through the Dell Reconnect program, which has collected more than 374 million pounds of computer electronics for responsible recycling since 2004. When combined with its services for businesses, Dell has recycled more than 1 billion pounds since 2008, with a goal of 2 billion pounds by 2020.

AUTO-TIES, TWO-RAMS, CLOSED-DOOR HORIZONTALS, VERTICALS, DENSIFIERS, and SHEARS



**CUSTOM QUALITY FOR EVERY APPLICATION**



**INTERNATIONAL BALER**

sales@intl-baler.com | 1-800-231-9286 | www.intl-baler.com



## PAPER

### AF&PA releases November paper reports for U.S.

The American Forest & Paper Association released its November U.S. paper reports.

#### Containerboard

Containerboard production was 4.8 percent lower compared to October 2014, 5.9 percent higher than November of last year and 1.4 percent higher year-to-date. The month-over-month average daily production was 1.6 percent lower. The containerboard operating rate for November dropped to 94.3 percent from October's 96.9 percent.

#### Kraft Paper

Total kraft paper shipments were 115.5 thousand tons, 7.7 percent lower than October. Bleached kraft paper shipments remained essentially flat compared to October at 8.6 thousand tons, while unbleached kraft paper shipments decreased from 116.5 thousand tons to 106.8. Overall, year-to-date shipments in 2014 are 2.8 percent lower than the same period last year. Total month-end inventories increased to 71.5 thousands short tons in November.

#### Printing-Writing Paper Report

According to the report, total printing-writing paper shipments decreased 8 percent in November compared to November 2013, with total paper inventories increasing 5 percent compared to October.

•Uncoated free sheet (UFS) paper shipments in November decreased 14 percent compared to November 2013. YTD shipments were down 9 percent in 2014. Imports of UFS increased 27 percent in October and were up 23 percent year-to-date in 2014.

•November coated free sheet (CFS) paper shipments decreased 3 percent. YTD shipments of coated freesheet grades decreased 3 percent. Exports of CFS papers were down 4 percent for the year compared to the first 10 months of 2013, with imports increasing 17 percent in October and 4 percent for the year.

### Pratt to open new factory in Wisconsin

Pratt Industries will begin construction on a new \$52 million corrugated box factory in Wisconsin this spring. The proposed 350,000 sq.ft. manufacturing facility, which will be built on a 56 acre site in Beloit, will produce approximately 600 tons of recycled boxes a day at capacity.

It's expected to be fully operational by January 2016.

Pratt said the company was committed to providing 140 full time jobs at the facility when it reached full capacity – as well as approximately 200 during the construction phase.

Aside from using 100 percent recycled paper in its box making process, the plant will also use the latest in water reclamation technology, and will eventually reduce discharge into the local sewer system to zero. All fork lifts and grab trucks will operate on compressed natural gas to reduce emissions.

•Uncoated mechanical (UM) paper shipments decreased 1 percent in November, following nine consecutive months of year-over-year increases. Year-to-date shipments of UM were up 4 percent compared to 2013.

•Coated mechanical (CM) shipments in November decreased 4 percent relative to November 2013 and were down 4 percent for the year. Exports of CM grades decreased 9 percent year-over-year in October but were up 6 percent compared to the first 10 months of 2013. Imports were down 18 percent year-to-date.

#### Paperboard Report

Total boxboard production increased 0.9 percent when compared to November 2013 and increased 2.1 percent from October.

Unbleached kraft boxboard production increased over the same month last year and increased compared to October. Total solid bleached boxboard and liner production increased when compared to November 2013 and increased compared to October. The production of recycled boxboard increased compared to November 2013 but decreased when compared to October.

### Cascades to sell its North America boxboard facilities

Cascades Inc., a manufacturer of green packaging and tissue paper products, has reached an agreement for the sale of its North American boxboard manufacturing and converting assets to Graphic Packaging Holding Company for \$44.9 million.

The Cascades boxboard units affected by the transaction are:

•East Angus, Québec, a mill that manufactures recycled coated boxboard for the production of folding cartons. Founded in 1910, it was purchased by Cascades in 1983.

•Jonquière, Québec, a mill that manufactures three-ply coated boxboard from virgin or recycled fiber. Founded in 1963, it was acquired by Cascades in 1984.

•Winnipeg, Manitoba, a plant that manufactures folding cartons. Founded in 1905, it was acquired by Cascades in 2001.

•Mississauga, Ontario, a plant that manufactures high quality graphic packaging. Founded in 1986, it was purchased by Cascades in 1992.

•Cobourg, Ontario, a plant that manufactures high-quality flexographic boxboard containers. It was built by Cascades in 1993.

The 5 plants affected by the transaction employ in all approximately 670 workers.

"Cascades is announcing an important decision that once again signals its commitment to refocusing its activities in the strategic sectors in which it excels. This transaction follows in the wake of a number of other actions taken during the course of the year, with a view to reducing our debt load and focusing our investments in certain core packaging sectors, as well as in the tissue paper and recovery sectors. It is important to take note that today's announcement does not affect our European boxboard operations," stated Mario Plourde, president and chief executive officer of Cascades.

The acquisition is subject to standard closing conditions and regulatory review and is expected to close in the first quarter of 2015.

*My friend recently got crushed by a pile of books, but he's only got his shelf to blame.*

# WANTED

**Do you have a  
Fuchs 360  
with a cracked boom or stick  
and Fuchs does NOT want to pay  
to repair it?**

**Well I DO and if YOU do,  
send your pictures & information to me.  
It will help in my class action lawsuit  
against Fuchs to fix mine and YOURS.**

# 518-465-1484

**Toby Grimmel  
Rensselaer Iron & Steel  
TobyGrimmel@Grimmelindustries.com**

## INDUSTRY PROFILE

### A Closer Look

by Donna Currie

#### Green Machine Sales

John Green • 603-329-5520



Based on his name, John Green, president of Green Machine Sales, might have been destined to work in a green business. But he didn't know that. He studied business and finance in college, tested the waters in a few different industries, and finally wound up working in the material handling business. "It was of great interest to me," he said, "compared to the financial sector."

However, if he could re-do his college years, he said, "I would have trained as an engineer because my interests lie more in the mechanical world than pencil pushing."

While working in the material handling business, he believed that the increased landfill costs were sure to cause an increase in recycling. He said that his thoughts about landfill costs were wrong, but his prediction was still correct, since the increase in commodities prices and the public's desire to recycle fueled the growth of the recycling industry. In 1991, he started a recycling equipment distributorship.

Soon, his company began developing and manufacturing components for recycling equipment; now they design, build, and sell all of their own equipment, components, and systems, including conveyors, optical sorting systems, and screen separating systems.

While they cater to the recycling industry, particularly construction and demolition, municipal solid waste and e-waste recycling, they also sell to other industries, including agriculture and pharmaceutical.

The systems are all customized to fit the client's site and built to suit the customer's needs for throughput and material separation. All components are 100 percent American made.

Green Machine Sales employs about 90 people, in manufacturing, service, installation and administration, in four different locations. The company is incorporated in New Hampshire and that's where the research and development work is done, UL-listed panels are built and the Green Eye Optical Sorting Recycling Systems are made.

There are two facilities in New York – a sales and service office, and the primary manufacturing facility. A new office was opened in Oregon for sales and service, which gives them a larger presence in the west – until recently, the majority of sales were east of the Mississippi, although they also sold some systems overseas.

While there are other staff members working in the sales office, Green said that he is the only salesperson, and he said that the customers "enjoy the fact that the owner is the only sales agent and that we offer direct personal attention."

Besides selling the equipment, Green said, "I am always first on the scene and last on the scene" and he's available to customers at all times via cell phone.

The sales discussion starts with the tons per hour to be processed, the material being processed, and the site where the equipment will be placed. Green Machine then creates a three-dimensional view of the equipment. Once that is accepted, building begins.

Not only does Green Machine design and build the equipment, but they also install it and train the employees on how to use and maintain it

If customers have an old machine, Green Machine can upgrade it or resell it through their other company, Green Machine Brokers.

After the equipment is in place and running well, Green said that he likes to stay in contact with the customers and help with any maintenance they might need.

Green Machine Sales is seeing the fastest growth with their Green Eye Optical Sorting Recycling Systems. Unlike other sorters that "see" color, the Green Eye systems identify components and materials at the molecular level, for much more precise sorting.

The machines also "see" in three dimensions, so they can see through shrink wrap or through barrier bottles. The sorters can tell the difference between types of wood, different grades of carpet, and can even sort paper by wood type, print, and color.

Even though the equipment is high-tech, Green said that he's particularly proud of "the sheer ruggedness of our brand." He said that he expects that many machines will be in service for 25 years or more before a rebuild or redesign is needed.

"It's very satisfying to meet and exceed a customer's requirements," Green said. We like to under-promise and over-deliver."

## PLASTICS

### SPI launches the 2014 Safety Statistics and Awards Program

SPI: The Plastics Industry Trade Association launched its 2014 Safety Statistics and Awards (SSA) Program, inviting the plastics industry to contribute their information to help SPI better understand the state of safety in the plastics industry while being recognized for achieving a level of safety performance above the industry average.

"The SSA program is how SPI tracks and analyzes data on worker safety in the plastics industry. The more facilities and companies that participate, the more clearly we can recognize outstanding safety records and better educate policymakers and the public about the plastics industry's sterling record of making employee safety a priority," said SPI president and chief executive officer William Carteaux. "The SSA program helps SPI tell their story, and acknowledge the facilities that go the distance to protect the plastics industry's most precious resource: its work force."

Entries for the 2014 SSA program are already being accepted and will continue to be until March 6, 2015. Participating companies should submit this year's entry form along with a copy of the specific facility's Occupational Safety and Health Administration (OSHA) 300 and 300A forms that have

been scrubbed of the personally-identifiable information of any employees. Entrants can submit separate forms for each individual site they wish to be considered for an award.

Awards will be given in three different categories:

- Gold Distinguished Safety Awards recognize worksites with no occupational injuries or illnesses, as defined by the Occupational Safety and Health Administration, during the calendar year 2014.

- Silver Achievement Safety Awards are presented to worksites with no OSHA recordable occupational injuries or illnesses involving lost work days or restricted work activity during the calendar year 2014.

- Bronze Special Recognition Awards are presented to those worksites with safety performance for 2014 that is 20 percent better than the national Total Recordable Cases average for their North American Industry Classification System code.

The 2014 SSA program will also recognize facilities with the two lowest rates of incident based on size, in three different categories for the first time this year: 1 to 100 employees, 101 to 350 employees and over 350 employees.

*A woman said to her friend, "My cat can really play chess!"*

*With a shocked expression, the other woman exclaimed, "Really? It must be*

*very smart!"*

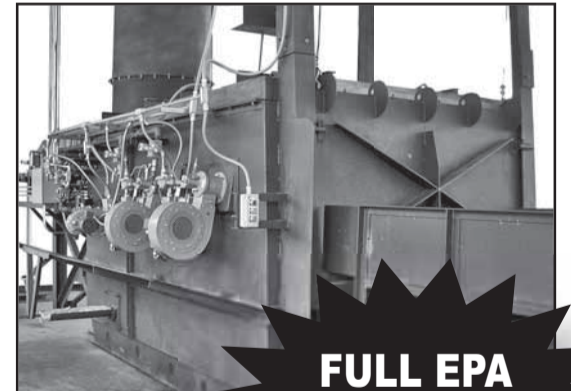
*"Well, I don't know about that... I usually win three out of four times!"*

## INCREASE PROFITS with the most efficient sweat furnace!

### With a US Furnace's MAX-4000 Hi Efficiency Sweat Furnace,

get the lowest fuel cost per lb to process than any other furnace manufacturer — GUARANTEED!

The lowest melt loss rate than any other manufacturer — GUARANTEED! On-site installation, training & service.



**FULL EPA compliance GUARANTEED.**



**RECYCLING SERVICES INTERNATIONAL**

**518-424-1168**

[www.RecyclingFurnaces.com](http://www.RecyclingFurnaces.com)

- Permit assistance available.
- Built for years of continued service.
- Large hearth opening for automotive scrap.
- New technology burner and control systems.

## PLASTICS

### Plastics makers award innovators in plastics recycling

The American Chemistry Council (ACC) disclosed the winners of the 2014 Innovation in Plastics Recycling Awards. The awards highlight innovations in the industry by recognizing new technologies, products and initiatives.

The winners – Geo-Tech Polymers LLC, GreenBlue and QRS Recycling – were honored at ACC's headquarters in Washington, DC. The award recipients were celebrated for developing innovative ways to help increase the availability and quality of recycled plastics.

•Geo-Tech Polymers has developed a patented process for removing coatings such as ink, chrome, paint, films and labels from used plastics prior to reprocessing. These coatings can impact the value or utility of recycled plastics if not removed. Independent analysis also demonstrates that the process leaves no residual chemicals. According to Geo-Tech, the process decreases "the amount of plastics that are going to landfill while also increasing the number of applications" available for recycled plastics, according to the company.

•GreenBlue's Sustainable Packaging Coalition has developed a recycling label for packaging that clearly communicates recycling instructions to consumers. The Coalition created the How2Recycle label in response to variations in recycling programs, unclear labeling and inaccurate recyclability claims that impeded recycling. As one example, polyethylene bags, films and

wraps can carry the store drop-off label to inform consumers to recycle them at nearby drop-off locations instead of curbside. Major companies and brand owners such as Sealed Air, Target, Kimberly Clark, Clorox and many more now use the store drop-off label on their products, which could significantly increase plastic film recycling.

•QRS Recycling has established plastics container recovery facilities (PRFs) to collect plastics that local material recovery facilities (MRFs) do not recycle for various reasons. QRS Recycling establishes PRFs within close proximity to numerous MRFs and equips them with sophisticated sorting, washing and grinding equipment to recover individual polymers. These PRFs provide a domestic market for plastics that often were exported, and they capture plastics that could otherwise require significant processing or sorting equipment. PRFs divert more plastics from the waste stream and provide manufacturers with high quality post-consumer recycled resins, including PET, polyethylene and polypropylene. The company is engaged in ongoing efforts to capture PVC and polystyrene, as well.

The awards contest is open to all U.S. entities that either collect or process plastics for recycling, manufacture equipment used to collect or process plastics for recycling, or manufacture a new product made in whole or part from recycled plastic.

## RUBBER

### Bridgestone opens U.S. facility to make giant tires

Bridgestone Americas revealed the opening of its first giant off road radial tire plant. Based in Aiken County, South Carolina, the 1.5 million sq.ft. manufacturing facility produces various off road radial tire products used to equip heavy haul trucks in mining and aggregates applications.

In 2011, Bridgestone planned a \$970 million investment to build the company's first U.S. based off road radial tire plant, as well as expand production capacity at Bridgestone's steel cord facilities in Clarksville, Tennessee and Saga, Japan. The opening of Bridgestone's new Aiken County Off Road Radial Tire Plant completes the largest portion of this planned investment. The Clarksville and Saga locations are suppliers of the Aiken County Off Road Radial Tire Plant, as steel cord is a key component used to build large and ultra-large off road radial tires.

Bridgestone's Off Road Radial Tire Plant is the second tire manufacturing plant Bridgestone has built in Aiken County, South Carolina. Approximately 350 people now work at the new Aiken County Off Road Radial Tire Plant, and Bridgestone expects to create an additional 200 positions when the location reaches full production in the next two to three years. At present, there are approximately 2,000 people working at Bridgestone's two tire plants in Aiken County.

The new Aiken County Off Road Radial Tire Plant was constructed with many sustainable features and materials in alignment with Bridgestone's global commitment to the environment. The plant is built to LEED Silver construction specifications. In addition, sustainable and advanced technologies from Firestone Building Products, a subsidiary of Bridgestone Americas, were used throughout the facility.

### Temporary ban on artificial turf made from recycled tires considered

California State Senator Jerry Hill introduced legislation that would prohibit the installation of artificial turf surfaces made from recycled tires in schools and parks in California while the state conducts a study to determine possible health risks. Concerns have mounted about chemical compounds contained in

recycled rubber tires as an increasing number of young athletes have developed leukemia, non-Hodgkin lymphoma, and testicular, prostate and other forms of cancer.

Hill's bill would require the various state departments to conduct a study to be completed by July 1, 2017.

## We recycle. (with shears)

The Allied AMS Series mobile shears are specifically designed and built for scrap processing, industrial contracting and demolition applications.

Packing up to 1,600 tons of cutting force and available in five models\*, the AMS Series improves your scrap and demolition production with increased cutting and piercing ability.

Durability and reliability are built into every AMS Series model using the highest quality materials while undergoing the toughest factory testing for quality control.

Key features of the AMS Series are:

- Increased pin diameter allows for greater cutting force
- Fast cycle times from an integrated speed valve means lower costs per ton
- Increase speed on 360° rotation offers greater operator flexibility
- Four-way indexable cutting blades can cut on all four cutting edges
- Bolt-on bracket allows for mounting on most excavators

Whether your job application calls for scrap processing, road and bridge reconstruction or demolition, one of the Allied AMS Series mobile shears provide unmatched performance for your job.

\*AMS-20, AMS-30, AMS-40, AMS-50 and AMS-100



3900 Kelley Avenue, Cleveland, Ohio 44114  
Tel: 216-431-2600 Fax: 216-431-2601  
e-mail: Sales@AlliedCP.com  
website: <http://www.AlliedCP.com>

© 2015 Allied Construction Products, LLC



# DEALER FINANCING • NEW EQUIPMENT FINANCING



## HOFFMAN 87 x 106 AUTO SHREDDER

New Hoffman 3000 HP 87 x 106 auto shredder. Complete through UMO. New and never assembled. Immediately available. Call!



## 2011 HITACHI 225LC W/SHEAR

2011 Hitachi 225LC with 2012 Genesis GXP300R shear. \$196,000



## 2005 LABOUNTY MSD4500R ROTATING SHEAR

Rebuilt like new. \$110,000



## 2000 GENESIS GMS 400 SHEAR

Completely rebuilt by dealer. Very nice shear at a very good price. \$68,000



## 2006 AL-JON 400 XL METAL BALER

7,600 hours. Good condition and immediately available. \$195,000



## 2008 BIG MAC CAR CRUSHER

Car crusher with "QS" quick setup. \$68,000



## CM MULTI-STACK SHREDDER

Complete system rebuilt recently by Columbus McKinnon. Always housed indoors. \$295,000



## 2002 FUCHS MHL 360

Good condition. Fresh motor and main pump. \$155,000



## 2006 AL-JON CL 580

Good working condition. \$179,000



## 2008 OVERBUILT BALER

In good condition, ready to deliver and go to work! \$255,000



## 2013 SIERRA T750L SHEAR/LOGGER/BALER

Portable shear/logger/baler with 750 ton shear. 1,900 hours. \$725,000



## OBERLANDER 1650 TON SHEAR

Good operating condition. \$650,000



## 2008 AMERICAN PULVERIZER 72 x 72

Slow speed rip shear shredder with two John Deere 375 kw gen-sets. All trailer mounted. \$550,000



## KOEHRING 6630 SK MATERIAL HANDLER

Koehring 6630 SK material handler with 15kW hydraulically driven genset. 8.3 Cummins power. \$47,500



## 2008 AL-JON 400XL LOGGER BALER

Can be seen in operation. \$210,000

# USED EQUIPMENT FINANCING • PRIVATE SALE FINANCING

## SGM NON-FERROUS SORT SYSTEM



**2005 HARRIS GS1100 SHEAR**

Excellent condition. \$650,000 loaded on your trucks



**2007 CM TIRE CHIPPER**

COMPLETELY REBUILT. New bearings, knives, ready to go! Complete system, 200 hp. \$195,000



**2007 SENNEBOGEN 850M W/ GENSET**

16,665 hours. Engine replaced 11,766 hours. \$168,000



**2011 FUCHS MHL335**

Equipped with a 5-tine grapple and 48" magnet. Almost NEW with only 200 hours and grapple never used. \$275,000



**2005 HARRIS GS 1100 GUILLOTINE**

Shear/Baler/Logger with 3 conveyors. 12,473 hours. Dismantled. \$650,000



### SYSTEM INCLUDES:

- 2010 SGM EMS-R-96 Sensor Sort
- 2010 Metso 90" Material Vibratory Feeder
- 2010 SGM DSRP 60" Dual Magnetic Separator
- 2010 SGM Vis 40" Induction Sorter
- 2010 SGM Controller
- 2010 Metso 60" Material Vibratory Feeder



*Good working condition and at only 25% of the original cost!*

**Won't last long at this price!**

**\$195,000.**

**DADE**  
Capital Corp.



**DADE Capital Corp.**  
**800-823-9688**  
Perrysburg, OH

**GREAT RATES!**

Visit [www.DADECapital.com](http://www.DADECapital.com) for other available equipment.



## METALS

# Steel imports decreased 18 percent in November

Based on preliminary Census Bureau data, the American Iron and Steel Institute (AISI) reported that the U.S. imported a total of 3,635,000 net tons (NT) of steel in November, including 2,878,000 NT of finished steel (down 18.2 percent and 16.3 percent, respectively, vs. October final data). Year-to-date (YTD) total and finished steel imports are 40,641,000 and 30,733,000 NT, respectively, up 37 percent and 34 percent respectively, vs. 2013.

Major products with significant YTD import increases vs. the same period last year include plates in coils (up 87 percent), cold rolled sheets (up 85 percent), wire rods (up 82 percent), cut lengths plates (up 75 percent),

sheets and strip hot dipped galvanized (up 59 percent), heavy structural shapes (up 58 percent), hot rolled sheets (up 47 percent), sheets and strip all other metallic coatings (up 43 percent), tin plate (up 29 percent), mechanical tubing (up 28 percent), oil country goods (up 19 percent) and reinforcing bars (up 17 percent).

In November, the largest volumes of finished steel imports from offshore were all from South Korea (467,000 NT, down 15 percent vs. October final), China (253,000 NT, down 31 percent), Turkey (184,000 NT, down 47 percent) and Japan (147,000 NT, down 38 percent) and Taiwan (120,000 NT, up 2 percent).

For 11 months of 2014, the largest offshore suppliers were South Korea

### U.S. IMPORTS OF FINISHED STEEL MILL PRODUCTS BY COUNTRY OF ORIGIN (Thousands of Net Tons)

|              | NOV<br>2014  | OCT<br>2014  | 2014<br>Annual (est) | 2013<br>Annual | % Change 2014<br>Annual vs. 2013 |
|--------------|--------------|--------------|----------------------|----------------|----------------------------------|
| SOUTH KOREA  | 467          | 550          | 5,487                | 3,718          | 47.6%                            |
| CHINA        | 253          | 368          | 3,233                | 1,898          | 70.4%                            |
| TURKEY       | 184          | 347          | 2,194                | 1,204          | 82.2%                            |
| JAPAN        | 147          | 237          | 2,089                | 1,898          | 10.0%                            |
| RUSSIA       | 35           | 121          | 1,350                | 241            | 460.7%                           |
| GERMANY      | 119          | 92           | 1,216                | 1,112          | 9.3%                             |
| TAIWAN       | 120          | 119          | 1,212                | 762            | 59.2%                            |
| All Others   | 1,553        | 1,605        | 16,746               | 13,997         | 19.6%                            |
| <b>TOTAL</b> | <b>2,878</b> | <b>3,439</b> | <b>33,527</b>        | <b>24,829</b>  | <b>34.4%</b>                     |

(5,030,000 NT, up 47 percent), China (2,964,000 NT, up 69 percent), Turkey (2,011,000 NT, up 74 percent), Japan

(1,915,000 NT, up 10 percent) and Russia (1,237,000 NT, up 468 percent).

# Steel import market share 30 percent in December

Based on the Commerce Department's most recent Steel Import Monitoring and Analysis (SIMA) data, the American Iron and Steel Institute (AISI) reported that steel import permit applications for the month of December total 3,563,000 net tons (NT). This was a 12 percent decrease from the 4,069,000 permit tons recorded in November and a 2 percent decrease from the November preliminary imports total of 3,635,000 NT. Import permit tonnage for finished steel in December was 2,856,000, down 1 percent from the preliminary imports total of 2,878,000 in November. For the full year

of 2014 (including December SIMA and November preliminary), total and finished steel imports were 44,205,000 NT and 33,589,000 NT, respectively, up 37 percent and 35 percent from the same period in 2013. The estimated finished steel import market share in December was 30 percent and is 28 percent for the full year of 2014.

Finished steel imports with large increases in December permits vs. the November preliminary included standard rails (up 177 percent), wire rods (up 74 percent), plates in coils (up 25 percent), cold finished bars (up 21 percent), hot rolled bars (up 14 percent), standard pipe

(up 13 percent) and wire drawn (up 13 percent). Products with significant year-to-date (YTD) increases vs. the same period in 2013 include plates in coils (up 91 percent), cold rolled sheets (up 88 percent), wire rods (up 85 percent), cut lengths plates (up 81 percent), heavy structural shapes (up 59 percent), sheets and strip hot dipped galvanized (up 57 percent), hot rolled sheets (up 45 percent), sheets and strip all other metallic coatings (up 41 percent), tin plate (up 30 percent), mechanical tubing (up 27 percent), oil country goods (up 21 percent) and reinforcing bars (up 20 percent).

In December, the largest finished steel import permit applications for offshore countries were for South Korea (340,000 NT, down 27 percent from November preliminary), Japan (215,000 NT, up 46 percent), China (197,000 NT, down 22 percent), Russia (187,000, up 434 percent) and Turkey (178,000 NT, down 3 percent). Through twelve months of 2014, the largest offshore suppliers were South Korea (5,370,000 NT, up 44 percent from the same period in 2013), China (3,161,000 NT, up 67 percent) and Turkey (2,189,000, up 82 percent).



## MOLEY MAGNETICS INC.

Satisfying All Your Lifting Needs.

- SCRAP GRAPS -

- DEMO & SCRAP MAGS -

- SCRAP SHEARS -

- MAGNET GRAPPLES -

### MOLEY MAG II (ESB)

- No Generator Needed
  - Various Sizes (26"/32"/36"/40")
  - Very Simple to Install
  - Extremely Dependable
  - Inexpensive to Acquire

### MOLEY ALLIGATOR SHEARS

- Automatic Hold Down
- Extra Heavy Scrap Applications (light non-ferrous to rebar)
- 185 Tons Cutting Force
- 14" & 20" Adjustable Blades

### MAGSTAR DIESEL GEN SET

- 9 to 15KW Sizes
- Murphy Engine Control Pkg.
- Self-contained Fuel Tank
- 4-Cylinder Kubota Motor

Learn More @ [moleymagneticsinc.com](http://moleymagneticsinc.com)

1 (844) M-MAGNET | [sales@moleymagneticsinc.com](mailto:sales@moleymagneticsinc.com)



# METALS

## Winners named in student design competition

Co-sponsors of an international student competition on cold-formed steel design declared three winners from the University of North Texas, Tongji University and the University of Waterloo. The 2014 International Student Competition on Cold-Formed Steel Design promoted higher education in cold-formed steel structural design and encouraged students to use creative thinking skills to solve engineering problems. Co-sponsors of the 2014 competition included the American Iron and Steel Institute (AISI), the Cold-Formed Steel Engineers Institute (CFSEI), the National Science Foundation (NSF), the University of North Texas, and the American Society of Civil Engineers (ASCE).

The competition generated 42 entries from 8 universities in China, Thailand, Brazil, Canada and the U.S. All entries were judged by a panel of industry professionals and ranked according to the design's efficiency and constructability, as well as the quality of

the essay submitted with the entry. The winners were:

- First Place - Chris Willis, University of North Texas, U.S.
- Second Place - Zongya Xu, Tongji University, China.
- Third Place - Benjamin Dow, University of Waterloo, Canada.

Cheng Yu, Ph.D., University of North Texas and a competition organizer, said, "This year's participants were asked to design an optimal cross-section shape for a 96" long cold-formed steel stud column which provides adequate compression strength and utilizes the least amount of material. We were pleased with the entries, which included more international participation than previous competitions."

The top three winners receive monetary awards and award plaques and will have their designs exhibited at various industry conferences in 2015.

For a direct link to the winning designs, view this article on [www.AmericanRecycler.com](http://www.AmericanRecycler.com).

## November steel shipments down 10.2 percent

The American Iron and Steel Institute (AISI) reported that for the month of November 2014, U.S. steel mills shipped 7,638,086 net tons, a 10.2 percent decrease from the 8,508,477 net tons shipped in the previous month, October 2014, and a 0.4 percent increase from the 7,604,428 net tons shipped in November 2013. Shipments year-to-date in 2014 are 90,270,336 net tons, a 2.8

percent increase vs. 2013 shipments of 87,790,788 net tons for 11 months.

A comparison of November shipments to the previous month of October shows the following changes: hot rolled sheets, down 8 percent, cold rolled sheets, down 9 percent and hot dipped galvanized sheets and strip, down 12 percent.



| Commodity               |               | Zone 1   | Zone 2   | Zone 3   | Zone 4   | Zone 5   |
|-------------------------|---------------|----------|----------|----------|----------|----------|
| #1 Bushelings           | per gross ton | \$215.00 | \$218.00 | \$260.00 | \$305.00 | \$340.00 |
| #1 Bundles              | per gross ton | 215.00   | 215.00   | 240.00   | 295.00   | 308.00   |
| Plate and Structural    | per gross ton | 210.00   | 227.00   | 260.00   | 295.00   | 342.00   |
| #1 & 2 Mixed Steel      | per gross ton | 210.00   | 220.00   | 260.00   | 285.00   | 310.00   |
| Shredder Bundles (tin)  | per gross ton | 170.00   | 175.00   | 180.00   | 230.00   | 255.00   |
| Crushed Auto Bodies     | per gross ton | 170.00   | 175.00   | 180.00   | 230.00   | 255.00   |
| Steel Turnings          | per gross ton | 139.00   | 135.00   | 125.00   | 160.00   | 215.00   |
| #1 Copper               | per pound     | 2.45     | 2.25     | 2.37     | 2.55     | 2.56     |
| #2 Copper               | per pound     | 2.30     | 2.05     | 2.12     | 2.40     | 2.39     |
| Aluminum Cans           | per pound     | .66      | .65      | .70      | .78      | .74      |
| Auto Radiators          | per pound     | 1.65     | 1.57     | 1.49     | 1.75     | 1.76     |
| Aluminum Core Radiators | per pound     | .59      | .65      | .68      | .69      | .61      |
| Heater Cores            | per pound     | 1.08     | 1.00     | 1.08     | 1.49     | 1.51     |
| Stainless Steel         | per pound     | .50      | .55      | .68      | .68      | .60      |

All prices are expressed in USD. Printed as a reader service only.

**DISCLAIMER:** American Recycler (AR) collects pricing and other information from experienced buyers, sellers and facilitators of scrap metal transactions throughout the industry. All figures are believed to be reliable and represent approximate pricing based on information obtained by AR (if applicable) prior to publication. Factors such as grades, quality, volumes and other considerations will invariably affect actual transaction prices. Figures shown may not be consistent with pricing for commodities associated with a futures market. While the objective is to provide credible information, there is always a chance for human error or unforeseen circumstances leading to error or omission. As such, AR is not responsible for the accuracy or completeness of the information provided, or for outcomes arising from use of this information. American Recycler disclaims any liability to any person or entity for loss or damage resulting from errors or omissions, including those resulting from negligence of AR, its employees, agents or other representatives.

## ISRI appoints new members to metals theft council

Conner Samuels, senior director of security operations investigations, policy and threat management at Time Warner Cable, and Sergeant Todd Powell of the Anne Arundel County Police Department's Metal Theft Unit in Maryland, have recently been named to the Institute of Scrap Recycling Industries' (ISRI) Law Enforcement Advisory Council (LEAC). The council is a select group of experienced law enforcement officers, prosecutors and security personnel with an understanding of the metals theft

issue. Based on its expertise, LEAC advises ISRI on ways to assist law enforcement.

Most recently, ISRI and the LEAC began developing tools for prosecutors to assist with building a metals theft case. Last Month, LEAC member Fred Burmester introduced a draft prosecutor's tool kit. It is currently being formatted and reviewed for future distribution in partnership with the National District Attorneys Association (NDAA).

## EPA adds former Colorado smelter site to Superfund list

The U.S. Environmental Protection Agency (EPA) added the former Colorado Smelter site in Pueblo, Colorado, to the National Priorities List (NPL) of Superfund sites. Superfund is the federal program that investigates and cleans up the most complex, uncontrolled or abandoned hazardous waste sites to protect public health and the environment.

EPA proposed the Colorado smelter site for addition to the NPL on May 12, 2014 and conducted a 60 day public comment period on the proposal. After reviewing and responding to all comments in a responsiveness summary, EPA has added the site to the NPL.

The former Colorado smelter site is located within a mixed use neighborhood near the Arkansas River and Pueblo's central business district. In 2011, EPA and the Colorado Department of Public Health and Environment (CDPHE) completed a site assessment that found elevated levels of lead and arsenic in residential soils and large slag piles in the vicinity of the site. These results indicated a comprehensive cleanup is necessary to reduce health risks for current and future residents. EPA and CDPHE have been working with city and county officials, commu-

nity groups, interested stakeholders, and residents to develop information and identify next steps in addressing the contamination.

In addition to finalizing the Colorado smelter site to the NPL, EPA is announcing that the ASARCO Globe Plant site in northeast Denver will be withdrawn from proposed listing on the NPL. Although the site was proposed for the NPL in 1993, site characterization and cleanup of the site has since occurred under a series of agreements between the State of Colorado and ASARCO, Inc. Upon completion of the cleanup in 2015, construction of a business park for warehousing, distribution and light industry will begin.

### Maurer Gondola Trailers



*The most durable trailer in the industry!*

#### STANDARD FEATURES

- Trailer lengths: 40', 44' and 48'
- Choice of 4', 5', 6' or 8' side walls
- 22.5k tandem axles with one axle ABS brake
- Three-leaf, heavy duty, spring suspension, closed tandem
- Two-speed landing gear
- Rubber mounted lights and sealed wiring system
- Diamond Vogel polyurethane primer and paint
- D.O.T. approved conspicuity tape
- Anti-sail mudflaps



888-274-6010  
[www.maurermfg.com](http://www.maurermfg.com)

### WE BUY FOIL LAMINATES

**PAPER FOIL  
POLY FOIL  
BARE FOIL**

~ We also buy surplus rolls ~

**CONNECTICUT METAL INDUSTRIES**

**203-736-0790**

[sales@ctmetal.com](mailto:sales@ctmetal.com)

[www.CTMetal.com](http://www.CTMetal.com)

## AUTOMOTIVE

### KAR Auction Services amends U.S. Securitization Facility

KAR Auction Services, Inc. announced that its subsidiaries Automotive Finance Corporation (AFC) and AFC Funding Corporation, have entered into Amendment No. 3 to the Fifth Amended and Restated Receivables Purchase Agreement, by and among AFC, AFC Funding, Fairway Finance Company, Chariot Funding LLC, Deutsche Bank AG, New York Branch, BMO Harris Bank N.A., Fifth Third Bank, JPMorgan Chase Bank, N.A. and BMO Capital Markets Corp. The Amendment increases AFC Funding's U.S. committed liquidity from \$800 million to \$950 million.

Commenting upon the amendment to the securitization agreement, John Hammer, chief executive officer and president of AFC stated, "I'm extremely grateful to our banking partners for their confidence in AFC as demonstrated by this larger securitization facility, secured through June 2016. Not only does this amendment to our securitization facility strengthen AFC's capabilities as a premier floor plan funding source throughout the United States, but more importantly, it underscores our commitment to all our dealer customers."

## SALVAGING Millions

by Ron Sturgeon  
Autosalvageconsultant.com

### Tools for success – an ongoing series

#### Have a mantra of constant development and improvement

The first article in this series listed several tactics that will make you more successful. The rest of the series will take a closer look at each of them.

Have a mantra of constant development and improvement. Read a business-building book per month. Dog-ear pages, make notes, make sure you have executable ideas. We all start at the same place. Some of us expand and others don't. Some of us who expand keep expanding until we can't anymore. That's can't, not won't. If you read 8 best sellers about marketing, you will be 80 percent as smart as the marketing people who want to get paid for advice to help you. The same applies to other areas of knowledge that are vital to your business success. Read in those areas, especially the ones you feel least confident about. After you finish a book, give it to your management team with the sections you have highlighted and pages you have dog-eared.

Attend seminars focused on making your business grow. You should go to at least six per year in the early years. Your team leaders should go with you. Some seminars will be suited for owners or top financial managers, such as how to minimize taxes. Other seminars, such as how to lead teams, will be a good fit for many of your managers and team leaders. There are one day seminars on a host of valuable, business-building topics: managing difficult personalities, motivating salespersons, how to hire and fire, etc.

Be passionate and have a sense of urgency about using what you learn. Be sure that what you learn gets translated into plans that make your business measurably better. Last month's article was about how to make the transition from boss to leader. Being passionate and having a sense of urgency about winning in business is part of making that jump.

Cultivate positive dissatisfaction. My good friend Dixon Thayer, former chief executive officer at Greenleaf, had a saying I still use and love. He used to tell me always to have positive dissatisfaction. Positive dissatisfaction requires you to always be learning and expecting more, but also to always be positive as you reach a succession of higher goals.

Capture the motivating power of team training. I have found that seminars and trainings are one of the best ways to motivate your most valuable people. Pay attention to how team members respond to the opportunity to go get new skills. Some won't want to go. They may still be solid employees but they may be left behind because they don't get the skills needed to take your business to where you intend it to go. Remember your best people will be motivated by the opportunity to acquire new skills or hone existing ones. Your accounting staff, for example, will be energized when you send them to an advanced Excel class. Make sure you display the certificates they have earned. Be sure to recognize staff members who make exceptional use of their new skills in meeting your business goals.

#### Remember, only you can make BUSINESS GREAT!

This article was provided by autosalvageconsultant.com, which was formed in 2001 by recyclers for recyclers, to help them improve their businesses.

### Insurance Auto Auctions supports Ohio legislation to modernize vehicle sales laws

Insurance Auto Auctions, Inc. (IAA), a business unit of KAR Auction Services, and a live and live online salvage auto auction company, disclosed that Ohio House Bill 468 has become law, and will become effective on the 91st day after the act is filed with the secretary of State. IAA and other industry leaders worked toward this result, one aspect of which is the repeal of the requirement for a Buyer Identification (BID) card, a state issued bidding license for the purchase of salvage vehicles at salvage auctions in the state of Ohio.

"The bill helps to modernize Ohio's salvage sales laws to be more in keeping with the laws of the vast majority of states by encouraging a more open and competi-

tive market in Ohio," said John Kett, chief executive officer and president, IAA.

This legislation is a modest step that helps open Ohio's salvage vehicle industry to a wider market. The bill broadens the categories of those to whom salvage vehicles can be sold. Potential bidders can now include, among others, used car dealers, and certain other automotive-related businesses.

Ohio House Bill 468 is an example of the efforts of IAA and others affected by our industry to put in place responsible salvage laws that serve our customers and society as a whole. IAA has a team of dedicated professionals who monitor legislative and regulatory actions and who work to improve these as necessary.

### U-Pull-&-Pay earns designations

U-Pull-&-Pay (UPAP) Phoenix and Albuquerque stores each received the prestigious Safety & Health Achievement Recognition Program (SHARP) designation from the U.S. Department of Labor. UPAP's Phoenix facility is the first self-serve auto part recycler in the U.S. to receive this award; the Albuquerque facility is the second.

The Phoenix and Albuquerque facilities were recognized for their commitment to creating and maintaining a safe and healthy workplace. SHARP is the highest

honor OSHA awards to small worksites that demonstrate an exemplary commitment to workplace safety and health.

U-Pull-&-Pay operates 9 self-serve used auto parts stores across the U.S., each with over 1,000 used cars and trucks displayed on stands, arranged in rows, and separated by manufacturer. Customers bring their own tools to remove parts, drive train components or any other accessories needed. U-Pull-&-Pay is wholly owned by The David J. Joseph Company.

### BALERS CRUSHERS BALERS CRUSHERS BALERS



**2011 Sierra 5000 Baler**  
150 HP with 2,445 hours, orange peel grapple, air compressor. \$275,000.



**2009 E-Z Baler**  
1,200 hours. Serviced and well-maintained. Located in Kentucky. \$105,000.



**2011 Al-jon 580 Baler/Logger**  
5,200 hours. Located in Central Florida. \$310,000.



**1999 OverBuilt Car Crusher**  
ONLY 2,400 hours! High speed, remote, hyd. landing gear. Air compressor.

**2012 Overbuilt Baler/Logger | \$345,000** Available soon

**1994 E-Z Crusher Elec. Stationary | \$35,000** Automation can be added! Located in Northern IA.

More trades coming in weekly, check them out on our website!

**OverBuilt** INC

800-548-6469  
605-352-6469  
www.OverBuilt.com  
sales@overbuilt.com





## WASTE

## Colorado Medical Waste receives award

Colorado Medical Waste, Inc. was honored with the Environmental Sustainability Award. The award was given to Colorado Medical Waste for demonstrating its commitment to energy efficiency, waste diversion and reduction, and water conservation.

Using the natural oxidizing power of ozone, electricity and an industrial shredder, waste volume is reduced by 90 percent to a sterile confetti residual with zero emissions as ozone reverts back to oxygen.

State of the art processes eliminate the public health effects and environmental impact of antiquated autoclave and incineration technologies. Efficacy tests prove ozone is 100 times more effective than steam. Colorado Medical Waste and ozone medical waste processing, brings medical waste management into the 21st century.

## Sacramento judge rejects Boeing's bid to demolish and dispose of radioactive waste

Sacramento, California Superior Court has denied Boeing's motion for summary judgment in a California Environmental Quality Act (CEQA) lawsuit over the demolition and disposal of radioactively contaminated structures from the site of a partial nuclear meltdown near Los Angeles, Consumer Watchdog said.

Boeing had claimed that the Department of Toxic Substances Control (DTSC) has no regulatory authority over the demolition and disposal of radioactively contaminated structures in the nuclear portion of the Santa Susana Field Lab (SSFL) in Simi Hills. The lab had tested small scale nuclear reactors, rocket engines, and fuels and suffered a partial nuclear meltdown in 1959 that has never been fully cleaned up.

The Department of Toxic Substances Control (DTSC) did not oppose Boeing's motion, nor did it present any evidence proving Boeing's claim.

"It is time for DTSC to stop kowtowing to egregious polluters by looking the other way to save them money on cleanups while endangering the public health," said Consumer Watchdog advocate Liza Tucker. "The state has to obey environmental laws when authorizing demolition and disposal of structures impregnated with radioactive wastes. This isn't rocket science."

Tucker said that the lawsuit's outcome could have broader ramifications over whether polluters need DTSC approval to oversee the cleanup of contaminated structures the agency routinely oversees at hundreds of other commercial and military sites across California.

Consumer Watchdog, Physicians for Social Responsibility-LA, Committee to Bridge the Gap, and the Southern California Federation of Scientists represented by Strumwasser & Wocher brought suit in August 2013 against

DTSC and the Department of Public Health (DPH) for allowing demolition and illegal disposal of radioactively contaminated structures from Area IV of the SSFL site without prior public review as CEQA requires.

The judge issued a preliminary injunction against the DTSC in December 2013 that prevented the DTSC from allowing Boeing to further demolish and dispose of any contaminated structures from Area IV pending the final outcome of the lawsuit.

In this most recent order, Judge Allen Sumner wrote: "Whether CEQA requires DTSC to approve Boeing's demolition and disposal activities is an issue of substantial and continuing interest. But this is not Boeing's decision to make, much less by unilateral action. This issue will be decided when the court rules on the merits of Petitioners' claims."

LOOKING FOR **BETTER** EDUCATION?

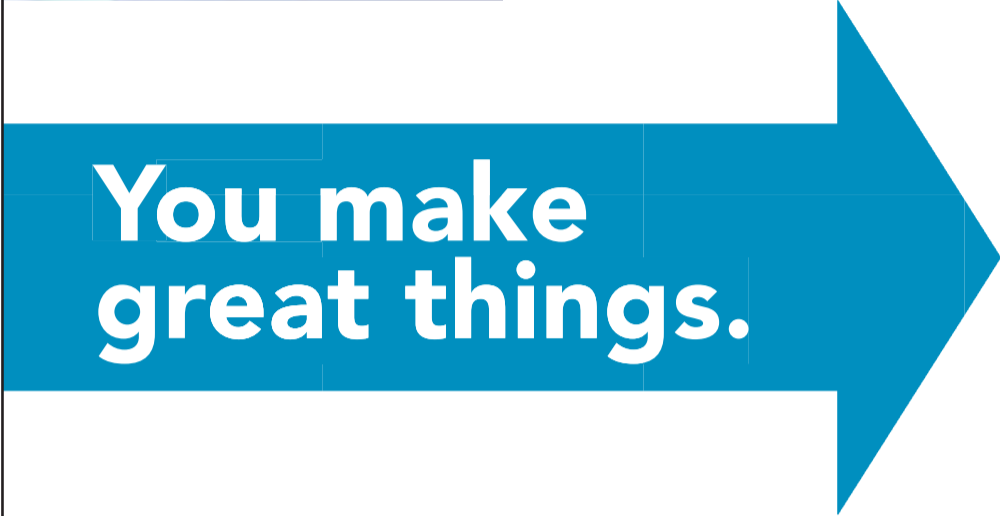
LOOK TO **WASTE EXPO LAS VEGAS**. A BETTER WAY TO DO BUSINESS.

**Get smarter!** When it comes to the latest technology and trends in the industry, there isn't a better place to learn than WasteExpo. From organics to dealing with public entities and municipalities, WasteExpo's curriculum is unrivaled. Combine that with more than 550 exhibitors, the ability to see the latest products, services and trends shaping the industry in-person—and this year's venue—you couldn't ask for a better value for growing your business or improving your department's efficiency. **For more information go to [www.wasteexpo.com](http://www.wasteexpo.com).**

**wasteexpo**  
A Waste360 Event

**Conferences & Special Events: June 1-4, 2015**  
**Exhibits: June 2-4, 2015**  
**Las Vegas Convention Center Las Vegas, NV USA**  
**wasteexpo.com**

**FREE Exhibit Hall** admission and discounted conference pricing await you. Use **PROMO CODE VP24** today!



**You make great things.**

**We make great things happen.**



In March 2015, more than 60,000 professionals from every aspect of the plastics industry and its vertical and end-user markets will assemble in Orlando, Florida for the largest, most influential plastics event of the year.

**Expect great things.**

Register for free today at [www.npeguestpass.org/AmRec2](http://www.npeguestpass.org/AmRec2)



*Face-to-Face, NPE2012*

**NPE2015: THE INTERNATIONAL PLASTICS SHOWCASE**  
March 23-27, 2015  
Orange County Convention Center  
Orlando, Florida USA



produced by **spi**



**THE SHOW YOU CAN'T AFFORD TO MISS!**  
Returning to Nashville by Popular Demand

March 29-31, 2015  
Music City Center  
Nashville, TN

Presented By  
**C&D WORLD**

Annual Meeting of the  
**CDRA**  
Construction & Demolition  
Recycling Association

**The Meeting Place of the C&D Industry**  
For 2015, the 22nd C&D World returns to Nashville. Don't miss out the event that brings the entire construction and demolition industry together to exchange ideas, source products, network, and have fun.

**Sponsorship and Exhibiting Opportunities**  
For sponsorship or exhibiting opportunities, contact Sean Carr at 216-409-9026 or email scarr@mining-media.com.

SPONSORED BY










**WWW.CDWORLDEXPO.COM**

## MODERN PLASTIC RECYCLING FACILITY FOR SALE



Unique opportunity to purchase a complete PET bottle sorting, washing, and recycling operation. The facility is available for re use in South Carolina, USA or for relocation. This plant was installed in 2008 with state-of-the-art FDA approved recycling of PET. The 109,000 sq. ft. facility consists of two buildings on 35 acres with approximately 2,000,000 lb. capacity silo storage.

The PET recycling facility has a capacity of 7,200,000 lbs. input per month. The sorting line consists of positive TITech optical sorters and Bollegraaf conveyors. Grinding systems have Herbold granulators. The plant has clear and colored caustic wash lines with dry and wet cleaning stations.

The caustic/PET flake application line produces 3,500,000 lbs. per month of clear FDA approved flake for bottle to bottle material.






25 Hainesport-Mt. Laurel Rd.,  
Hainesport, NJ 08036 USA  
tel: +1.609.267.1600 • fax: +1.609.267.4499  
www.perryvidex.com • fgarcia@perryvidex.com

United States • United Kingdom • Mexico • Poland • Czech Republic • Russia

# COPPER CABLE GRANULATORS



**COMPACT MACHINES from 200 lbs/hr - 3,000 lbs/hr with Turbo technology**

- 99.9% Separation of the copper from the plastic without having to re-run
- Bulk loading by the pre-shredder
- Capable of processing any type of cable including car wire, data cable, armored cable

**Call for a free demo at one of our operating sites!**

**Crow Environmental**  
Recycling Solutions

**Mason Smith 540-255-4909**  
www.crowenvironmental.net

**SUBSCRIBE  
RENEW  
RESEARCH**



**VISIT**  
[www.AmericanRecycler.com](http://www.AmericanRecycler.com)

**ADVERTISE  
READ  
ENJOY!**

# NEW PRODUCT SHOWCASE



## ORGANIC RECYCLERS IMPROVE PROFIT WITH ONE ATTACHMENT

ALLU Group Inc. introduced attachments for organic recyclers and composters. The attachment processes food waste, screening out unwanted materials, reducing material to a uniform size, mixing and placing it into windrows for composting as well as aerating organic material.

Choices include the D-Series Screener Crusher and the DL Screener Crusher. The D-Series has the widest variety of choices for product fragment size, ranging from .6" to 6". The new DL Crusher doesn't require a case drain line for operation, allowing the operator to attach it and start screening.

**ALLU Group**  
700 Huyler Street  
Teterboro, NJ 07608  
800-939-2558  
www.allu.net



## MOD RECYCLING CART FEATURES OPTIONAL HINGED PANEL ACCESS

Recycling collection carts and trucks in the Poly-Trux® line from MOD now include the company's ergonomic, hinged side panel as an option to reduce bending and reaching inside the cart, and to eliminate the need for workers to lift heavy items over the rim.

The hinged safety panel invites easy access to appliances, electronics waste, C & D debris and other bulky items. It's available on more than a dozen different recycle carts and trucks in a wide range of sizes.

**MOD**  
4920 State Road  
Ashtabula, OH 44004  
800-829-4535  
www.recyclingcarts.com



## NAVISTAR INTRODUCES VEHICLE DESIGNED FOR DISASTER RELIEF

Navistar, Inc. partnered with Terranova GTS to showcase an International DuraStar multi-purpose vehicle designed to aid in disaster relief efforts, including a water treatment system capable of purifying 5,000 gallons of water per day. The truck also includes firefighting capabilities and a mobile medical unit.

The DuraStar is equipped with an EPA certified microbiological water purifier. The water treatment system removes particulate, turbidity, bacteria and virus from any water source including rivers, streams, ponds and groundwater under the influence of surface water, rain, unsafe municipal supplies and springs.

**Navistar Intl. Corporation**  
2701 Navistar Drive  
Lisle, IL 60532  
331-332-5000  
www.navistar.com



## UNTHA INTRODUCES NEW XR3000 SHREDDER

UNTHA has created a new XR3000 shredder. The UNTHA Eco Drive ensures up to 50 percent less energy consumption compared to other electro-hydraulic drive options. The water-cooled drive motors require no fresh air supply. The compact design makes installation in existing systems easier, while the low charging height ensures a smooth feeding of material into the shredder with a wheel loader.

The XR3000 is capable of shredding loose commercial waste and bulky household waste for subsequent material separation on a screen.

**Untha Shredding Technology America, Inc.**  
5 Merrill Industrial Drive  
Hampton, NH 03842  
603-601-2304  
www.untha-america.com



## VECOPLAN LAUNCHES NEW LINE OF V-ECO SHREDDERS

Vecoplan's new V-ECO shredders feature the latest innovations in size reduction. The V-ECO series, feature VFD inverter drives, "W" rotors embedded with five rows of cutters, single or double rows of bed knives, pneumatic assist drop down screen carriages, hydraulic lift-up cutting chamber floors, and externally adjustable cutting tolerances.

A hydraulic lift-up cutting chamber floor provides the safest, quickest and most convenient access to the cutting chamber. Just push a button for clean-outs, material changes or tramp metal removal. No bolts, no alignment, no problems.

**Vecoplan**  
PO Box 7224  
High Point, NC 27264  
336-861-6070  
www.vecoplanllc.com



# Classified ADVERTISEMENTS

**877-777-0043**  
—Always Available—  
**PLACE YOUR TEXT AD ONLINE**  
www.AmericanRecycler.com

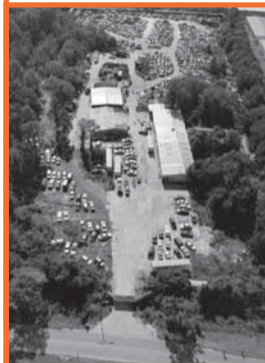
**Rates**  
**Text Classifieds** \$65 for up to 50 words. Add \$1 each additional word.  
**Display Classifieds** \$70 per column inch depth, 2.5" width.

WE ACCEPT CHECKS, MONEY ORDERS, MASTERCARD, VISA and DISCOVER.  
ALL CLASSIFIED ADVERTISEMENTS MUST BE PAID IN ADVANCE.

## Featured Classifieds

### Tampa Bay Salvage Yard

10 acre auto salvage yard, in business over 35 years for sale. Includes



crusher, front end loader, semi, too much to list. Also two buildings over 5,000 sq.ft. heated and air conditioned. Located in Tampa Bay, Florida area. Zoned I-2.

**727-271-3375**  
racefends@aol.com

### WHAT ARE YOU WORTH?

We provide **Business Valuations** and **Financial Proforma Forecasting** for all solid waste business or permit activities. If you are facing a transaction, financing, or business succession...

**412.562.0891 tel**  
**412.562.0892 fax**  
info@sternerconsulting.com



**sternerconsulting.com**

### Auto Recycling

**2006 BIG MAC PORTABLE CRUSHER**  
For sale. 2,695 hours, John Deere engine, good shape, road ready. \$89,995 OBO. E-mail lloyd@picknpullsa.com or call 210-389-7321.

### MOTOR BLOCKS

Paying TOP \$ for Unclean Blocks!  
**METALICO ANNACO**  
**800-394-1300**

**VEHICLE RECYCLING EQUIPMENT:** High volume, Midi & low volume vehicle drainage, fuel extraction, CAT cutter & decanner, air conditioning tool, tire removal, lifts, tanks, airbag deployment unit, copper wire granulation, car wire granulators, engine breakers. Finance, service and technical information also available: Crow Environmental. Call Mason 540-255-4909.

**FOR SALE**  
UP TO 30 TONS PER HOUR OF PORTABLE FERROUS SHREDDING CAPACITY

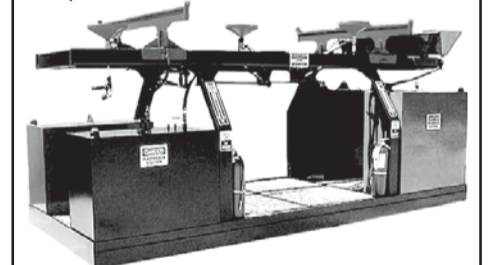


**2000 HORSEPOWER**  
**ZB THOR 2121**  
**FULLY MOBILE**  
**HAMMERMILL AUTO-SHREDDER**

Financing Available  
Call +1.847.480.8900  
www.alanross.biz

### IRON AX ENVIRO-RACK

Complete fluid removal in less than 5 minutes!



The Enviro-Rack is the most superior auto fluid removal and dismantling system on the market today.

**877-247-6629 • IronAx.com**

### Balers

### HARRIS BALER



**HRB-8-NF 2** two ram, 200 hp, serial # 2309, **REDUCED price!**  
**\$55,000**  
FOB FL  
**404-874-4401**  
Crigler Enterprises

## Balers



NEW AND USED EQUIPMENT  
REPAIRS RELINES RELOCATIONS  
FULLY STOCKED PARTS DEPARTMENT



**Guardian by SafeTech.**  
Pioneers in automatic  
personal protection for  
conveyors, balers,  
shredders, and other  
hazardous machinery.  
Set up a consultation  
today.

Ely Enterprises, Inc.  
Lorain, OH 44052  
216-252-8090  
sales@elyent.com  
www.elyent.com

**BUILT TO BE THE FINEST  
TWO-RAM  
BALERS**

**SIERRA**  
800.343.8503 | sierraintl.com

**'07 RB6000 Sierra  
Baler/Logger**  
**'96 AlJon 400 Portable Baler**



1996 AlJon 400 portable baler, 6 cylinder Cummins Diesel, clam grapple and hydraulic landing gear: \$75,000  
2007 RB6000 Sierra baler/logger, mounted on 3-axle drop deck trailer, owner bought new in 2007, 9,882 hours on machine, machine has new motor w/less than 10 hrs. Bushings on doors are rebuilt w/less than 10 hours. Machine is ready to work: \$250,000

Keith / L&K Metals Inc.  
337-367-1138

## Balers



**BALERS • SHEARS • SHREDDERS  
EPS and PET EQUIPMENT**

Our exclusive No Worries™ Guarantee ensures that if you purchase new or reconditioned recycling equipment from OBC and are not completely satisfied, we'll make it right or take it back. No worries. Period.



216.398.8800  
www.OBCBaling.com

## Businesses

**PLANNING FOR RETIREMENT**, ferrous and nonferrous with auto salvage, 20+ acres, warehouse, heated floor, 24' ceiling, 2 loading docks, 2008 FUCHS material handler, grapple and magnet. Also, LaBounty Shear 220, Komatsu excavator, lots of support equipment. Roll-off and tilt bed service with or without industrial accounts. Located 100 miles in all directions of major shredders, 75 miles from New Castle, Pennsylvania and 7 miles from Dubois Airport close to I-80. Turn-key operation. Fax offers to 814-772-9735.

**EIGHT ACRES, ZONED INDUSTRIAL**, US1, licensed manufacturing, junkyard, reclamation center and salvage yard. Across from new transfer station and C&D facility. Between Daytona and St. Augustine off I95 exit. Close to weigh stations on I95 and US1. Contact Mr. Sklar at 386-931-2020 or houseboat145@gmail.com.

## Material Handlers



**SCRAP MASTER COPPER WOUND  
57D REBUILT MAGNET**

230 volts. Selling it for \$32,500.  
Contact Tony  
414-322-1410

**NEW MAGNETS!**  
**No gen-set required!**

Up to 40" that run off of machine's batteries.



800-472-0453  
EQUIPMENT INTERNATIONAL

## Material Handlers

**KUHN EQUIPMENT**



2006 Cat M322C MH - Hydraulic cab, A/C, 41 ft. reach MH boom & stick, gen set, Cat grapple, and solid tires.  
Call For Price!



### Mobile Scrap Shears

Genesis GXP500R w/360 degree rotation, 2 units. Choice of fully RECONDITIONED or good used. Call For Price!

Genesis GXP400R w/360 degree rotation. Fully RECONDITIONED and work ready. Call For Price!

Genesis GXP660R MAXX w/360° rotation. Fully RECONDITIONED and work ready. Call For Price!



2006 Volvo EC460BLC equipped w/LOW TIME, factory rebuilt Genesis GXP660R MAXX Mobile Shear w/360° rotation. Call For Price!



2006 Hitachi ZX270LC - 3 equipped with LaBounty MSD2000R mobile shear with 360° rotation and less than 500 hours since complete factory rebuild. Through shop, checked, serviced, and ready to go!!! Call For Price!



2008 Cat M322D MH - Hydraulic cab, A/C, 41 ft. reach MHboom & stick, NEW gen set, outriggers, and solid tires. Veryclean machine. Call For Price!

800-225-0623  
after hours: 843-324-8487  
sales@kuhnequipment.com

**NEXT DEADLINE  
FEBRUARY 16**

## Material Handlers

**GEN-SETS  
MAGNETS  
GRAPPLES**

800-472-0453  
EQUIPMENT INTERNATIONAL

**KUHN EQUIPMENT**



2006 Cat 330DL equipped w/factory rebuilt LaBounty MSD2500R Saber Series shear w/360° rotation and warranty. Call For Price!



2005 Cat M325C MH - Hydraulic cab, A/C, 51 ft. reach MH boom & stick, grapple, outriggers, and solid tires.  
Call For Price!



2006 Case CX240 - 6,200 hrs., equipped w/LOW TIME Genesis GXP400R Mobile Shear w/360° rotation. Very Clean, one owner package. Call For Price!



2009 Fuchs MHL340D MH - 4,000 hrs, hydraulic cab, A/C, 45 ft. reach MH boom & stick, NEW gen set, grapple, outriggers, and solid tires. Excellent. Call For Price!

800-225-0623  
after hours: 843-324-8487  
sales@kuhnequipment.com



# Classified ADVERTISEMENTS

**877-777-0043**

—Always Available—

PLACE YOUR TEXT AD ONLINE  
[www.AmericanRecycler.com](http://www.AmericanRecycler.com)

### Rates

|   |  |
|---|--|
| <b>Text Classifieds</b>                                   | <b>Display Classifieds</b>                 |
| \$65 for up to 50 words.<br>Add \$1 each additional word. | \$70 per column inch depth,<br>2.5" width. |

WE ACCEPT CHECKS, MONEY ORDERS, MASTERCARD, VISA and DISCOVER.  
ALL CLASSIFIED ADVERTISEMENTS MUST BE PAID IN ADVANCE.

## Material Handlers

**EQUIPMENT  
INTERNATIONAL**  
"Recycling Equipment Specialists"  
**800-472-0453**



**WE HAVE IN STOCK...**

(29) MATERIAL HANDLERS  
with Cab Risers, Magnet Gen-Sets  
& Rotating Grapples

- MOBILE SHEARS
- PORTABLE BALERS
- NEW GRAPPLES
- NEW GEN-SETS & MAGNETS

**WE BUY & SELL  
All Types of  
USED SCRAP PROCESSING  
EQUIPMENT**

**We Specialize In**

**FUCHS, LIEBHERR, SENNEBOGEN & CAT  
MATERIAL HANDLERS**

**GENESIS & LABOUNTY MOBILE SHEARS**

We Offer Equipment Locator Service &  
We Custom-Build Machines  
with Magnets, Shears, Etc.

**CALL FOR A QUOTE TODAY!!!**

ADVERTISING IN AMERICAN RECYCLER is one of the smartest things you can do for your business! It's also one of the easiest ways to increase your sales income. Call 877-777-0043 and tell us what you would like to share with our tens of thousands of readers! All ads are also shown on AmericanRecycler.com FREE!

## Miscellaneous

**WANTED TO BUY  
USED RECYCLING EQUIPMENT**

**HOVDE RECYCLING EQUIPMENT**  
800-617-5219 or 214-662-2648  
steven@scrapequip.com / scrapequip.com

### CRUSH-ALL 125



Used as an attachment on excavators. Crush concrete, concrete with rebar, rock, block, brick, asphalt, asphalt shingles, many other breakable products. Weight: 10,000 lbs.

**\$21,000**

**615-838-4543/Mike Williams**

**THE ORIGINAL CATALYTIC CONVERTOR REMOVAL TOOL:** Our powerful and easy-to-use products are unsurpassed and we've been making them for 20 years! Choose from 110 or 12-volt, gas or de-canning models. Our three hydraulic models are fast, safe and effective. Custom applications provided as well! 800-999-8100, [www.supershears.com](http://www.supershears.com)



**Recycling Equipment-  
Your Complete Source!**

Fuchs Material Handlers  
Harris/IPS Balers  
Genesis Shears  
LBX Material Handlers  
Used Equipment

**We Service What We Sell**

TO SEE OUR INVENTORY PLEASE VISIT  
[sargentsequipment.com](http://sargentsequipment.com)  
708-758-2062

## Miscellaneous

**ORANGE PEEL GRAPPLE, BRAND NEW!** 3/4-yard 4-tine orange peel grapple with 15-ton 360° rotator. Show floor model for sale, SPECIAL PRICE: \$18,800. Please call Moley Magnetics at 716-434-4023 or visit [www.MoleyMagneticsInc.com](http://www.MoleyMagneticsInc.com).

## USED (MIDWEST) ERIN C&D RECYCLING SYSTEM SORT LINE



- 2009 Single line system expanded into dual line system with air separator.
- Direct-feed 6' wide x 20' long double deck Erin Fingerscreener. Integrated fines collection conveyor to collect stockpile 1.5" minus fines at rear of fingerscreener.
- 5' wide x 80' long sort line with 4 sort bays.
- 6' wide x 45' long overs incline conveyor.
- In-line magnet with support structure, for mechanized capture of ferrous metals within 2-8" fraction.
- Redox 3-way air separation system, to mechanically separate light through heavy density material.

**FOR FURTHER DETAILS,  
CONTACT CHUCK  
216-661-6102 EXT. 201**

### '99 1100 ton Vezzani PC1023 AC



Very low hours • Many spare parts  
Well maintained • FOB • Newton, WI  
~~\$575,000~~ **\$500,000!**  
Contact Eric  
(920) 693-8261 • [bbmetals@tds.net](mailto:bbmetals@tds.net)

## Hi-efficiency, new technology. INCREASE PROFITS! SWEAT FURNACES



**US Furnaces's  
MAX-4000**  
Also:  
**PARTS • REPAIR • CUSTOM BUILDS**  
**518-424-1168**  
[www.RecyclingFurnaces.com](http://www.RecyclingFurnaces.com)

## Miscellaneous



**CLEARSPAN IS YOUR PREFERRED  
SOLUTION FOR ALL YOUR RECYCLING NEEDS**

## FREE HEAT & DISPOSAL of USED OIL



KAGI Heating Supplies  
**888-866-5244**  
[www.KAGIBURNER.com](http://www.KAGIBURNER.com)

with **KAGI  
MULTI-FUEL  
WASTE  
OIL  
BURNERS**  
EPA APPROVED  
MADE IN THE USA  
The **HEATWAVE**  
by Siebring

## Shredders

## TRYCO

**SELLING  
SHREDDERS  
and PARTS  
since 1984!**  
[tryco.com](http://tryco.com)

**217-864-4541**

## Software

**SALVAGE YARD SOFTWARE.** Auto recyclers yard management system for Windows™ by Rossknecht Software. Obtain extra revenue from scrap vehicles. Includes vehicle parts breakdown, invoicing, bar code tags, digital pictures, reports, towing, sales history, bookkeeping. New: Scrap purchase invoice and prints checks; send your inventory to your website. \$750 complete, no monthly fees. Visit [www.rossknecht.com](http://www.rossknecht.com), e-mail [arsales@rossknecht.com](mailto:arsales@rossknecht.com). Free demo CD 303-884-5315.

## Wanted

**WANTING TO BUY:** Hydraulic crushing cylinder or cylinders for early 80s Big MAC car crusher! Prefer in good working order but all will be considered. Please call 814-241-8845 or e-mail [campbellauto@outlook.com](mailto:campbellauto@outlook.com).

**NEXT DEADLINE:  
February 16**  
Call Today 877-777-0043

**IF THIS IS YOUR FLUID REMOVAL EQUIPMENT,**



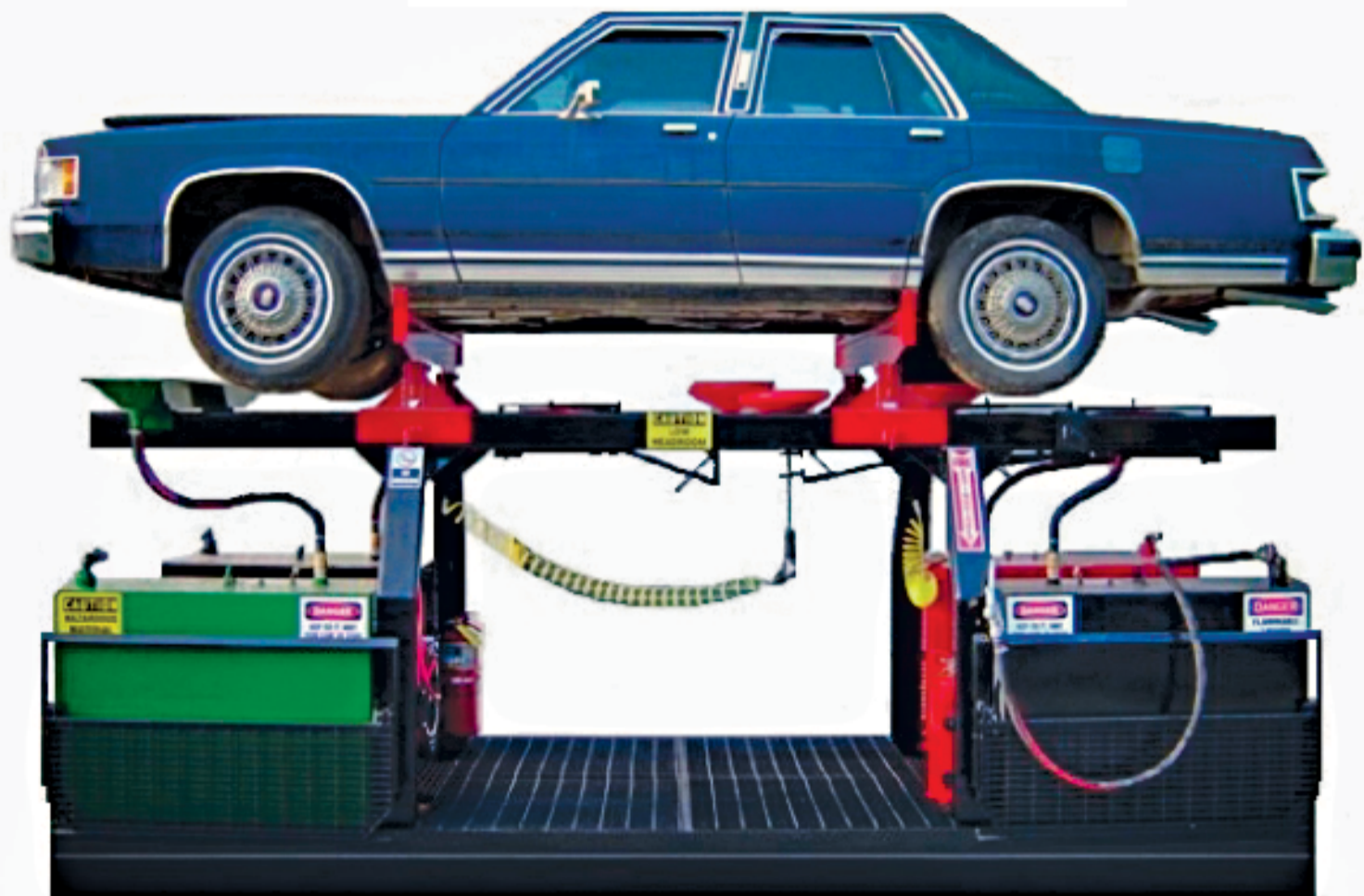
**WE NEED  
TO TALK.**



***THERE IS A BETTER WAY...***

## **The ENVIRO-RACK**

Get full details at [IronAx.com](http://IronAx.com) today.



**IRON Ax**

877-247-6629  
[www.IronAx.com](http://www.IronAx.com)

 **RECYCLING**  
EQUIPMENT SALES, INC

# HIGH-SPEED BALER/LOGGER

- 20' Charge Box
- Heavy-Duty Knuckle Boom
- Superior Lift and Reach

More Options,  
More Convenience...  
**OverBuilt.**



View our **TRADE-IN INVENTORY**  
in our ad on page 16!

## HIGH-SPEED CAR CRUSHER

THE ONLY TRUE HIGH-SPEED SYSTEM AVAILABLE



- Largest Opening on the Market
- Advanced Oil Recovery System with Sludge Traps and Large Clean-outs
- State-of-the-Art Automation System
- 400-gallon Fuel Cell and Optional Lockable Auxiliary Fuel Pump
- Optional High-speed Oil Bypass System
- 22' & 24' Crusher Chambers Also Available
- Twin Lid Safety Lock System Engaged from the Ground
- Ground Accessible Grease Stations on the Lid for Safe Maintenance.



Huron, South Dakota

800-548-6469 [www.OverBuilt.com](http://www.OverBuilt.com)  
605-352-6469 [sales@overbuilt.com](mailto:sales@overbuilt.com)

### CAR CRUSHER BUYING GUIDE

clip & save! ✂



#### STANDARD CRUSHERS

|   | OverBuilt       | COMPETITION A             | COMPETITION B             |
|---|-----------------|---------------------------|---------------------------|
| What is the size of the opening (length & height)?  | 20'3" L x 10' H | ___' ___" L x ___' ___" H | ___' ___" L x ___' ___" H |
| What is the setup time?   | NONE            | _____                     | _____                     |
| Do you use weather-tight electrical connections for automation controls and trailer lights? | YES             | Yes / No                  | Yes / No                  |
| Does the crusher have fenders on the front of the machine?                                  | YES             | Yes / No                  | Yes / No                  |
| Are the guide frames tied at the top?   | YES             | Yes / No                  | Yes / No                  |
| How big is your fuel tank?  | 400 GALLONS     | ___ Gallons               | ___ Gallons               |
| Do you have wear guides on the main cylinder pistons and glands?                            | YES             | Yes / No                  | Yes / No                  |

#### REMOTE CONTROL

|   |            |             |             |
|---|------------|-------------|-------------|
| How quickly can you get me a replacement automation system?           | NEXT DAY   | _____       | _____       |
| How long does it take to replace the receiver on the machine?         | 10 Minutes | ___ Minutes | ___ Minutes |
| Can I start and stop the engine with the remote?                      | YES        | Yes / No    | Yes / No    |
| Does the remote have individual up and down cylinder control buttons? | YES        | Yes / No    | Yes / No    |
| Do you use rocker switches to limit the up stroke of the cylinders?   | YES        | Yes / No    | Yes / No    |

#### OPTIONS

|   |         |          |          |
|---|---------|----------|----------|
| High Speed  | YES     | Yes / No | Yes / No |
| Maximum oil flow from your cylinders?               | 250 gpm | ___ gpm  | ___ gpm  |
| What is the maximum port size of the cylinders?     | 2.5"    | ___"     | ___"     |
| Can I get an auxiliary fuel pump to fill my loader? | YES     | Yes / No | Yes / No |

#### SAFETY & HAZARDS

|  |     |          |          |
|--|-----|----------|----------|
| Do the safety locks engage from the ground, without climbing on the machine or into the chamber? | YES | Yes / No | Yes / No |
| If one side of the lid is raised and the other side is down, will it damage the crusher?         | NO  | Yes / No | Yes / No |
| Does your waste oil recovery tank have sludge traps and large clean-out access panels?           | YES | Yes / No | Yes / No |
| Do you have lockable cabinets for the:   |     |          |          |
| Engine controls  | YES | Yes / No | Yes / No |
| Remote control   | YES | Yes / No | Yes / No |
| Valves   | YES | Yes / No | Yes / No |
| Auxiliary fuel port  | YES | Yes / No | Yes / No |

This helpful guide was provided to you by:



800-548-6469  
[www.OverBuilt.com](http://www.OverBuilt.com)



## Planning for deconstruction: What's next for construction and demolition recyclers?

by MARK HENRICKS

mhenricks@americanrecycler.com

Buildings today are designed for easy, cost-effective construction, with little attention paid to how costly and difficult it might be to someday demolish structures and recycle construction materials. A different approach called designing for deconstruction is an emerging discipline that could significantly increase the quantity and quality of materials recycled from demolition.

As described in a recently issued report from VTT Technical Research Centre of Finland, designing for deconstruction requires going beyond using recycled and recyclable materials. In addition, this expanded cradle-to-grave thinking would allow for easy disassembly by, for instance, using bolts or screws to connect building elements.

"Proper design for future deconstruction will greatly reduce the time and effort needed to dismantle the building frame," commented Petr Hradil, VTT research scientist. "It will also affect the life cycle

impact of the building because all of the embodied energy and carbon content is retained."

Designers and architects today are beginning to consider future ability to recycle building materials when they design structures. One way this can be done is by using materials that are more readily recycled. For instance, metals are generally much easier to recycle than plastics, noted Richard Diven, managing partner of R.J. Diven Consulting, a Coeur d'Alene, Idaho, a demolition consulting firm.

"Metal is very recyclable," Diven said. "Virtually 99 percent of metals are recycled now." However, considerable amounts of plastic materials such as polystyrene foam insulation are also being used in buildings, Diven said. "They're difficult to recycle, at least in the older buildings that have them," he said of plastics.

One reason plastic building materials can be difficult to recycle is that it is challenging to separate them from other materials. Often, plastics are glued or otherwise attached to

other materials using adhesives and techniques that make it hard for recyclers to separate economically. In the vision VTT put forth, designers and architects would minimize chemical connections, as well as specifying adhesives, sealants and other fasteners that would be more readily disassembled when the building's lifespan was complete.

Another key element of the design for deconstruction principles developed by VTT is to document the materials and methods used in construction, and retain this documentation to make it available for future demolition. "The availability of information about the material quality, components, sizes and manufacturing process at the time of their reuse can further reduce the costs associated with material testing and quality checks," Hradil said.

VTT's deconstruction plan also calls for keeping designs simple when possible, ensuring that connections between building elements are accessible, separating mechanical and electrical and plumbing systems, using elements that can be interchanged, and generally thinking of future deconstruction to make it as efficient, affordable and safe as possible.

Designing for deconstruction is likely to have the most impact on designs for certain types of buildings. These include warehouses, schools, supermarkets and stadiums. That forecast is based on expected life spans of these types of buildings and the materials and methods used to construct them. Generally, designing for deconstruction is of less importance for very long-lived structures, such as museums.



Designing for deconstruction in the expansion or building of warehouses, schools, supermarkets and stadiums are thought to have the most impact. PHOTO BY AMYINLONDON | DREAMSTIME.COM



Timbers that have been salvaged and can be reused.

The nature of a building's environmental effect, including emissions and carbon impact, is also of concern. For instance, a warehouse requires comparatively little energy for operation, so the carbon embedded in its materials makes up as much as 60 percent of the building's lifetime carbon impact. Embedded carbon in an office building, on the other hand, may amount to just 45 percent of its lifespan carbon impact, so planning for deconstruction is

less critical with this type of building.

Planning for deconstruction today is generally limited to specifying recyclable materials. Diven, who has worked in demolition for more than 50 years, said he has never been asked for advice on designing a permanent building to facilitate demolition. However, he noted, the practice of thinking about eventual demolition during design is decades old when it comes to materials.

See DECONSTRUCT, Page B6

**TIRED** OF DEALING WITH  
**UNSUPPORTIVE**  
**UNSYMPATHETIC**  
**UNKNOWLEDGABLE**  
**FINANCE COMPANIES?**



**S T A R T**

dealing with

**DADE Capital Corp instead!**

We'll take care of you because we know and understand your industry.

800-823-9688 | [www.DADECapital.com](http://www.DADECapital.com)

## A Letter from the Editor

Je suis Charlie.

The slogan, made popular in the wake of the January 7 attack on France's Charlie Hebdo newspaper, has become a rallying cry for those who support the freedoms of speech and expression. The attack on the satirical newspaper's offices – orchestrated in retaliation for the paper's publication of unflattering cartoon images of the Islamic Prophet Mohammed – left 12 of Charlie Hebdo's staff and supporters dead, 11 wounded, and sparked an ultimately fatal manhunt for the radical Islamist perpetrators.

Rather than being cowed into silence by the attack, Charlie Hebdo doubled down. In the weekly edition following the attack, they published a "Survivor's Issue" that featured a cartoon of Mohammed holding a sign with the slogan "Je suis Charlie" prominently displayed on the cover, along with the headline "Tout est Pardonne," which translates to "All is Forgiven."

So great was the demand for the Survivor's issue that Charlie Hebdo increased the publication run from their usual 60,000 copies to an incredible 7 million copies. Even more spectacular, though, is that the enormous run sold out just minutes after its release. According to some sources, lines at French newsstands resembled those outside of major retailers during American Black Friday sales events.

Unfortunately, the provocative cover did spark violent protests in several countries, and even lead to additional deaths. Some news outlets, largely determined by their geographical readership, chose not to republish the image for fear of retaliation. But the vast majority of the public and press chose to support the message that the world at large will not be silenced by a violent, strident minority.

American Recycler stands in solidarity with Charlie Hebdo and those around the world that advocate for the right to speak and publish ideas freely. We denounce the use of violence as a means to silence individuals and entities who espouse ideas with which some disagree.

Je suis Charlie. American Recycler is Charlie, and we support the freedoms of speech, expression and press for everyone – not just for those with whom we happen to agree.

Until next month,



Esther Fournier  
Editor & Publisher

## Construction firms add 48,000 jobs in December

Construction employers added 48,000 jobs in December and 290,000 for the year, the largest annual increase since 2005, as the sector's unemployment rate fell to 8.3 percent, according to an analysis by the Associated General Contractors of America. Association officials said many firms are expanding payrolls to keep pace with growing construction demand, but are having a hard time finding qualified workers to fill key positions.

"Construction firms are clearly ramping up their hiring to keep up with swelling demand for construction," said Ken Simonson, the association's chief economist. "Demand for workers to construct apartments, pipelines and huge industrial projects is likely to remain robust in 2015."

Construction employment totaled 6,166,000 in December, the highest level since March 2009, with a 12-month gain of 290,000 jobs or 4.9 percent, Simonson noted. Residential building and specialty trade contractors added a combined 13,500 employees since November and 132,100 (6 percent) over 12 months. Nonresidential contractors hired a net of 34,400 workers for

the month and 158,200 (4.3 percent) since December 2013. The heavy and civil engineering construction segment, which includes pipelines, petrochemical and power plants, and public works construction, added 11,600 jobs in December and 57,900 (6.6 percent) over the year.

The number of workers who said they looked for work in the past month and had last worked in construction fell to 680,000 from 958,000 a year earlier. The latest total was lower than in any December since 2000. In addition, the average workweek for craft workers (production and nonsupervisory employees) lengthened to 40.1 hours, the most since the series began in 1947, as firms ask employees to work more overtime to make up for the difficulty in finding additional workers.

Association officials said the construction employment gains come as more contractors report having a hard time finding enough qualified workers to fill available positions. They urged Congress to act quickly to reform and increase funding for the Perkins Act, which funds most career and technical education programs in the country.

## New recycling program for fluorescents commences

Washington residents can recycle fluorescent lights and other mercury containing lights for free at 130 sites throughout the state, with more being added in the months ahead.

LightRecycle Washington collection sites will take traditional fluorescent tubes, the twisty compact fluorescent lights and high intensity discharge lights, which are commonly used in outdoor lighting fixtures. The program does not accept lighting fixtures or ballasts.

Both individuals and businesses can drop off lights for recycling, although there is a limit of 10 lights per day. Visit [www.lightrecyclewa.org](http://www.lightrecyclewa.org) to find a collection site.

Since 2010, it has been illegal in Washington to dispose of mercury containing lights in the regular garbage. This new program, funded by a \$.25 environmental handling charge on each new mercury containing light sold at retail, makes it simple to recycle old lights.

EcoLights Northwest, located in Seattle, is the recycling company that will process the lights collected.

## Asbestos removal on the rise as Detroit tackles blight

With its recent exit from bankruptcy, Detroit, Michigan is making a steady comeback. The fight to end blight is one key component to reinvigorating its neighborhoods, but before demolition or renovation can take place, the asbestos has to be removed. That's where the DEQ's Air Quality Division becomes a central player.

The demolition and renovation of buildings has the potential to release asbestos fiber into the air. Asbestos was widely used in buildings before it was identified as a dangerous carcinogen. Asbestos is commonly found in:

- Attic and wall insulation produced containing vermiculite.
- Vinyl floor tiles and the backing on vinyl sheet flooring and adhesives.
- Roofing and siding shingles.

•Walls and floors around wood-burning stoves protected with asbestos paper, millboard or cement sheets.

•Hot water and steam pipes coated with asbestos material or covered with an asbestos blanket or tape.

•Oil and coal furnaces and door gaskets with asbestos insulation.

•Heat-resistant fabrics

Part of the asbestos removal process requires contractors to notify the DEQ prior to any work. As the fight against blight ramps up, these notifications to the DEQ have nearly doubled. The department has processed 14,572 asbestos notifications this year, compared to 7,844 in 2013. More than half of 2014's notifications were for locations in Wayne County.

Michigan's asbestos notification and inspection program originated with authority from the U.S. Environmental Protection Agency. Asbestos was one of the first hazardous air pollutants regulated under the Clean Air Act to protect

workers, the public and the environment by minimizing the release of asbestos fibers. In addition to receiving asbestos notifications and conducting inspections, the DEQ also collaborates with the Michigan Occupational Safety and Health Administration, or MIOSHA, asbestos program to gain more depth in responding to complaints.

Under the law, a licensed contractor must perform a thorough search prior to demolition to determine if asbestos-containing materials are present. Any asbestos-containing materials detected must be removed prior to demolition. The owners and contractors are also required to submit notification to the DEQ 10 working days before the asbestos abatement and/or demolition of the structure.

To manage the high volume of notifications, contractors and owners are encouraged to use the online notification system created by DEQ.

### Call Shaughnessy

All 50+ Canada: 800-549-0490  
CALLSHAUGHNESSY.COM

Strip-Tec Alligator Shears/Wirestrippers/Granulators

Wire stripper recon. CSX001 - Save \$300!

ALCAN Flattener / Blowers and Densifiers  
\*Looking for rebuildable Alcan Densifiers\*

ALCAN ALUM CAN DENSIFIER CP1200.  
Call for details!

NEW USA-made 7" HYD. Alligator Shear. \$5,500

Guillotine shear, steel-belt  
conveyors w/stacker. \$35K

SIERRA 500T Shear/Logger/Baler  
w/Conveyors, needs work. REAL DEAL!

COLMAR 700T Diesel  
Shear/Logger/Baler w/Grapple. Call!

Colmar 3210 Portable Logger Baler, CALL!

E-Z Logger portable diesel w/crane, good  
running condition, under \$60k

Available Now: Steel Belt Z PAN Conveyor  
60" x 26', very strong in good condition.



## EQUIPMENT SPOTLIGHT

To be included in the spotlight, you must **manufacture** the equipment featured. We require a company name, contact person, telephone number and, if applicable, a website address.

To be listed in the appropriate spotlight, please call 877-777-0043.

### UPCOMING TOPICS

MAR Paper/Plastics Balers

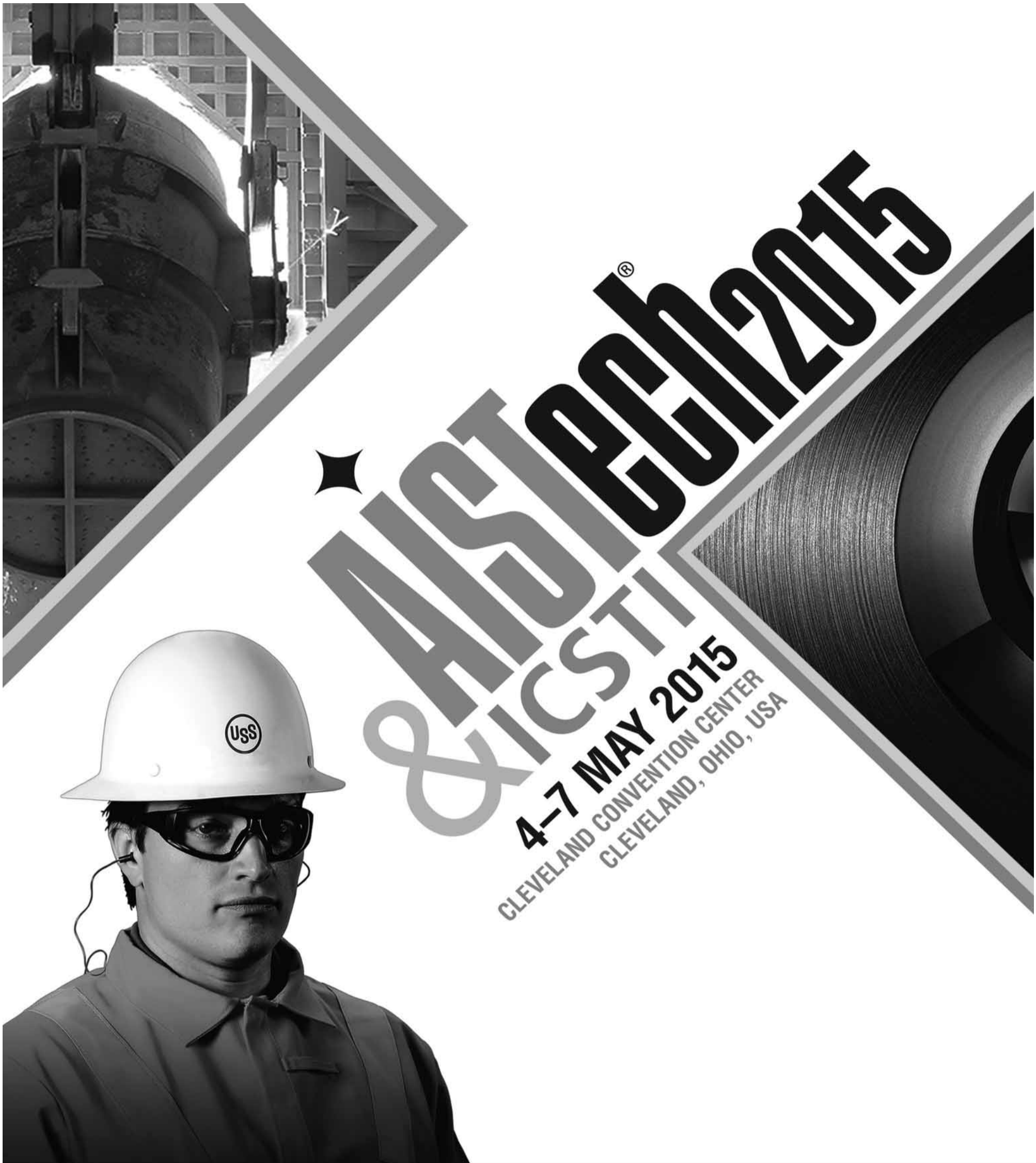
APR Magnets

MAY Fluid Recovery

JUN Tarping Systems

JUL Conveyor Systems

American Recycler is not responsible for non-inclusion of manufacturers and their equipment. Manufacturers are to contact American Recycler to ensure their company is listed in the Equipment Spotlight.



# AISTECH<sup>®</sup> & ICSTI<sup>®</sup> 2015

4-7 MAY 2015  
CLEVELAND CONVENTION CENTER  
CLEVELAND, OHIO, USA

Register online at [AISTech.org](http://AISTech.org)



# EQUIPMENT SPOTLIGHT

## Portable Shears

by **MARY M. COX**

maryc@americanrecycler.com

In the often intricate business of construction and demolition (C&D), it is certainly prudent to acquire the equipment that will complete a job in the most efficient manner possible. One piece of equipment that is often involved in the C&D process is the portable shear. The shear is a powerful assistant to the user and there are quite a few factors to consider when choosing the type of shear that will be most appropriate for any given application.

"When purchasing an attachment, there can be many challenges involved, especially if there are limitations in the flexibility of the product. Not all manufacturers build adaptability and mounting flexibility into their products like we do," said Sal LaCorte, scrap and demolition products sales manager, Allied Construction Products. The company offers the AMS Series of mobile shears.

LaCorte suggests that buyers consider ease of maintenance and lowering operational "life" costs when purchasing attachments. "Allied has addressed these factors in the AMS Series by simplifying the consumable blades system and by increasing the durability of the overall structure to handle higher lifetime duty cycles. To learn what is needed in an attachment, we listened to advice provided by end-users. The result of that allows us to offer the best product in the market place."

LaCorte offered these tips when selecting any attachment: 1) Choose the correct attachment for the job. Properly size the attachment to the carrier to be used. 2) Properly set-up the auxiliary circuits to the manufacturer's flow and pressure specifications. 3) Provide the operators with training and manuals so they understand the carrier, attachment, maintenance intervals and signs of incorrect operation and premature failures. Seek training and advice from the manufacturer on operations, safety and service requirements. 4) Know the substances contained in the materials being handled. Know what your carrier and attachment is capable of processing before you start the job. 5) Prior to operation, survey the job and materials to be processed. If possible, sort the material prior to operation to avoid processing of material that is incorrect or too large. 6) Daily maintenance increases accuracy of clearances for blades and knives.

Iron Ax recently introduced a new shear to the market. "The name of the

product is Big Mouth, due to the larger jaw opening in relation to the shear's weight, when compared to any other shear we have ever built," said John Kitchens, vice president.



Iron Ax, Inc.

"This shear has a unique blade design that sets it apart from all other shears being produced in America. All the blades are the same size. It uses 12 of these blades, and the piercing tip is in two pieces. These two pieces are symmetrical and can be used from either side or either end, and allows a user to flip the tip without rebuilding it. This is a huge advantage and greatly reduces downtime. Also, there is a spacer at the point of the tip that keeps material from entering in between the two halves of the tip. Each of the symmetrical blades provides eight cutting edges per blade. This shear has been tested in our operation for the past year and has proven to be much lower in cost to operate and superior in performance, when compared to any other product on the market. The new, patent-applied-for design of the Big Mouth will also set this shear apart from any similar products now offered," Kitchens said.

Iron Ax owns and operates five scrap yards. They've been in the scrap business for 45 years and have been producing shears since the 1980s. "Over 20 years ago we started making products for use in our scrap operation. It was a natural transition to introduce our products in the marketplace. We are in the exact same business that our customers are, and we know what they need to get the job done. It gives us a very unique perspective that our customers seem to really appreciate," stated Kitchens.

Pemberton® manufactures a mobile shear called the PES 100R for skid steers, loader backhoes and excavators. It can be mounted as a second member (replacing the excavator dipper stick), or as a third member (attached to the end of the dipper stick), or on a skid steer with Quick-Tach hookup. Two circuits are required for the

shears. Shear circuit: 2500 to 5000 psi full flow, rotation circuit: 1200 psi (max) 4 to 6 gpm. For machines not equipped with a double auxiliary circuit, Pemberton offers a diverter/rotational circuit operating from the shear cylinder circuit.

Continuous 360° powered bi-directional rotation is standard. The units feature four-way index-able blades, meaning that when the cutting edges begin to dull, the blades can be rotated to bring a new edge to bear. Each blade has a total of four cutting edges that can be used, one at a time, until the entire blade needs to be reconditioned or replaced. The shear will "stall out" hydraulically if an attempt is made to cut something beyond its capabilities. This prevents damage to the shear if the operator should inadvertently try to cut high-tensile hardened steel like that found in axles or railroad rails. "Our shears are used in demolition and scrap recycling applications for both ferrous and nonferrous metals. We always like to note that shearing versus torch cutting is safer, more economical and faster," explained Mike Duffy, lead sales representative.



Allied Construction Products, LLC

He added that "It is important to shear correctly, to get the most life from the unit, and of course, to shear safely. Shearing correctly involves positioning the jaws as close as possible to 90° in proximity to the piece being cut, and also positioning the piece as deep in the throat as possible. Shearing is inherently dangerous because pieces of the material being cut can fly off. OSHA requires that an operator's cab be equipped with a front window guard and an overhead guard. Also, personnel must remain at least 75' away from the shear or in a protected area while it is in operation."

Duffy believes that as the economy continues to improve, there will be an increasing need to demolish old structures and recycle used materials. As a result, he expects that shear sales will continue to increase.

### Manufacturer List

**Allied Construction Products, LLC**  
Sal LaCorte  
800-321-1046  
www.alliedcp.com

**Atlas Copco Construction Equipment**  
Matt Franzel  
909-552-9685  
www.atlascopco.us

**A-Ward Attachments**  
David Avery  
201-697-7301  
www.a-ward.com

**Genesis Attachments**  
David Palvere  
715-395-5252  
www.genesisattachments.com

**Gensco America, Inc.**  
Sean Abenstein  
800-268-6797  
www.genscoequip.com

**Indeco North America**  
Bill Pankracij  
203-713-1030  
www.indeco-breakers.com

**Iron Ax, Inc.**  
John Kitchens  
877-247-6629  
www.ironax.com

**Kinshofer USA**  
Francois Martin  
905-335-2856  
www.kinshofer.com

**Pemberton LLC**  
Mike Duffy  
800-393-6688  
www.pembertoninc.com

**ShearCore**  
Greg Bacon  
601-675-2073  
www.shearcore.com

**Stanley LaBounty**  
Nathan Buckert  
630-536-1402  
www.stanleyhydraulic.com

**Wag Way**  
Craig Waggoner  
800-992-4929  
www.wagway.com



**2006 LABOUNTY MSD3000 SHEAR**

\$68,000

Completely rebuilt with warranty.

**2000 GENESIS GMS 400 SHEAR**



Completely rebuilt by dealer. Very nice shear at a very good price. \$68,000

**800-823-9688**

**2005 LABOUNTY MSD4500R ROTATING SHEAR**



Rebuilt like new.

\$110,000

# EPA inspection reveals rule violations in Missouri

EPA Region 7 conducted a record keeping inspection at Dynamic Porch & Patio., an Independence, Missouri remodeling company, in July 2014, which revealed violations of the Renovation, Repair and Painting (RRP) rule. Dynamic Porch & Patio builds and installs insulated roofs, add-ons, pergolas, decks, and replaces siding. The company has agreed to pay a \$5,559 civil penalty to settle allegations that it violated the RRP Rule.

According to an administrative consent agreement and final order filed by EPA Region 7 in Lenexa, Kansas, the random inspection revealed that Dynamic Porch & Patio failed to obtain initial firm certification, failed to provide the Renovate Right pamphlet to the

owner of the residence, and failed to retain records for three years regarding compliance with lead-safe work practices.

The RRP rule requires that contractors that work on pre-1978 dwellings and child-occupied facilities are trained and certified to use lead-safe work practices. This ensures that common renovation and repair activities like sanding, cutting and replacing windows minimize the creation and dispersion of dangerous lead dust. EPA finalized the RRP rule in 2008 and the rule took effect on April 22, 2010.

This enforcement action addresses RRP rule violations that could result in harm to human health.

## NEED A SCRAP SHEAR? THE CHOICE IS CLEAR: INDECO ISS STEEL SHEARS!

**SERIOUS SHEARS for Serious SCRAP WORK**



- Fastest cycle time in the industry=more cuts per hour!
- Made from extra strength Hardox steel with continuous rotation set-up
- Broad range of sizes & configurations

**INDECO**  
North America

**203-713-1030**  
[indecobreakers.com/sales](http://indecobreakers.com/sales)

Don't Keep Wasting Your Waste Shingles!

Join the **RASolution!**  
Recycled Asphalt Shingles



**Asphalt Shingle Grinding Service, LLC**  
Right Product, Right Price, First Time, First Pass



Nationwide Mobile Grinding Service  
Manufacturers Waste & Tear-offs  
Recycled Asphalt Shingles Sales

Call or Click Today To Learn How Recycled Asphalt Shingles from Asphalt Shingle Grinding Service, LLC Improve Your Bottom Line!

**765-472-5500**

[www.AsphaltShingleGrinding.com](http://www.AsphaltShingleGrinding.com)



The one and ONLY!

Buy the ORIGINAL Supershear Catalytic Removal Tool!



De-Canning Shear

110-Volt Supershear



Gas Supershear



12-Volt Supershear



Building the best products on the market for over 20 years.

**800-999-8100 or 480-789-3893**  
[supershears.com](http://supershears.com) / FAX# 480-304-4870



28<sup>th</sup> Southeast Recycling Conference & Trade Show  
It Is All About The Business Of Recycling!



**Conference: March 8 - 11, 2015**

**Trade Show: March 8 - 10, 2015**

**Venue:** Hilton San Destin Beach Golf Resort  
& Spa Destin, Florida

**Conference Features:**

- ▲ 600 - 700 Recycling Industry Leaders
- ▲ 70+ Exhibitors
- ▲ Educational Sessions
- ▲ Business Networking Events

If you are interested in Sponsoring or Exhibiting,  
please contact **Nicki Mayfield** at **850-558-0609** or by email at **nicki@acmlc.us**.

Website: [www.SoutheastRecycling.com](http://www.SoutheastRecycling.com)

## Successful C&D recycling program preserved

The EPA's decision allows construction industry to continue using as much as 30 percent of the coal combustion waste produced annually

The chief executive officer of the Associated General Contractors of America, Stephen E. Sandherr, released the following statement in response to the Environmental Protection Agency's (EPA) decision to set performance standards for the safe disposal of coal combustion waste, including fly ash:

"Today's decision by the EPA to set performance standards for the safe disposal of coal combustion waste preserves what is one of the most successful commercial recycling programs in use today, the use of fly ash in concrete, asphalt, grout and other construction materials. As a result, the construction industry will be able to continue to recycle an estimated 30 percent of these combustion byproducts each year.

"Our association and its members went to great lengths to make sure that EPA officials appreciated that the construction industry has successfully and safely used fly ash in concrete and other materials for over six decades. Indeed, construction firms aggressively recycle a host of materials each year, including concrete, steel and asphalt. And thanks in part to our efforts, EPA officials understand that allowing this recycling program to continue will address many of the disposal challenges the energy industry faces with fly ash.

"We look forward to working with agency officials to ensure this rule is implemented in a way that continues to allow for the safe and effective use of coal fly ash in construction."

## Deconstruct

■Continued from Page B1

Examples include the long standing restrictions on use of lead paint, asbestos and other materials that can pose a hazard to demolition workers and others.

Diven said economic and market pressures and the difficulty of planning for a demolition process that may not happen for decades keep design for deconstruction out of the mainstream for architects and engineers. "The problem is the goal is to sell the structure and satisfy the client," he said. "I don't know if most people think out 30 to 40 years."

Modular building techniques are becoming more common, however, and they can greatly facilitate deconstruction and allow for re-use of modular components for other structures. "We have dismantled buildings, taken them apart and resold them to be re-erected somewhere else," Diven commented.

Sustainable building certification systems such as Leadership in Energy and Environmental Design (LEED) in the U.S. and the European Building Research Establishment Environmental Assessment Method (BREEAM) incorporate some elements of designing for deconstruction in

assessments and ratings, which encourages architects, designers and owners to think about the topic, Hradil said. He anticipates these types of standards, and others even more encompassing, will eventually show up elsewhere. "The design for deconstruction may be part of the future building codes or as one of the requirements for building permits," he commented.

Ultimately, designing for deconstruction could meaningfully increase the amount, quality and value of recyclable materials recovered from deconstructed buildings, while reducing the time, effort and cost of recovering them. That could allow companies that specialize in recovery and recycling of construction and demolition (C&D) materials to make much more cost-effective bids on demolition jobs, Diven said, because the value of the materials recovered is a major element in estimating such bids.

Hradil predicts that in 2020, over 70 percent of C&D materials in Europe will be re-used or recycled. Hradil feels that at that point, design for deconstruction will be a more widespread practice. "We think that the architects, designers and owners should think beyond the deconstruction by proposing the possible scenarios for the future utilization of dismantled building elements," he said.

**Call John Monaghan, CPA, CVA for your expert financial advice.**

EXPERIENCED IN SOLID WASTE & RECYCLING BUSINESS VALUATIONS

**What's Your Business Worth?**



VZN Group, LLC

419-882-1886  
[www.vzncpa.com](http://www.vzncpa.com)

- Accurate Business Valuation
- Financial Forecasting
- Consulting
- Tax Preparation & Planning

John Monaghan, CPA, CVA

## Airport constructs system for runoff

The Gerald R. Ford International Airport (GFIA), located in Michigan, is constructing a treatment system to remove a deicing agent from the airport's stormwater runoff before it reaches the Thornapple River in Kent County.

The DEQ's Water Resources Division re-issued GFIA's National Pollutant Discharge Elimination System, or NPDES, permit in August 2013. The NPDES permit authorizes the discharge of stormwater associated with deicing activities. To meet a condition of the permit, GFIA is constructing a natural treatment system for stormwater and aircraft deicing fluids, or ADFs. ADFs are glycol-based products used by airlines to remove snow and ice.

GFIA only uses propylene glycol-based ADF products at their airport, considered a more environmentally friendly option. ADFs applied at airports mix with the snow, ice and rainwater, and eventually discharge from the site during stormwater runoff events.

Although the propylene glycol-based option is said to be better for the environment, and although GFIA implements numerous best management practices through its stormwater management programs, discharges of stormwater containing residual ADFs to nearby streams sometimes contribute to the formation of biofilms. This can create conditions that negatively impact aquatic insect habitat, fish habitat and dissolved oxygen levels.

Construction of a treatment system is underway at GFIA and is slated for completion by October 2015. The system will be the first system of its kind constructed at an airport in Michigan, and one of only a few nationwide.

## Illinois agencies award contractors

Five major transportation agencies – the Illinois Department of Transportation (IDOT), the Illinois Tollway, Chicago Department of Transportation (CDOT), Metra and the Chicago Department of Aviation (CDA) – along with five county departments of transportation recognized companies that have given taxpayers an exceptional return on their investment by exceeding project expectations.

IDOT named F.H. Paschen, S.N. Nielsen & Associates LLC, of Chicago, winner of the Portland Cement Concrete Pavement Award of Excellence for constructing 2.11 miles of a 4-lane divided highway, a diamond interchange and four new bridges – all for the Algonquin Bypass, located in McHenry County.

Arrow Road Construction Company, of Mount Prospect, was named winner of IDOT's Hot Mix Asphalt Award to recognize 3.85 miles of milling and resurfacing on Illinois Route 83 from Illinois Route 19 to Illinois Route 72 in Elk Grove Village, Bensenville, and Wood Dale.

IDOT awarded Dunnet Bay Construction Company, of Glendale Heights, the New Bridge Construction Award for constructing the Central Avenue Bridge on Interstate 55 in Forest View.

James McHugh Construction Company, of Chicago was awarded IDOT's Bridge Rehabilitation Award of Excellence for bridge rehabilitation on Interstate 94 at the Stony Island Feeder Interchange, including bridge deck replacement and roadway improvements.

Traffic Control & Protection, Inc., of West Chicago, was given the Work Zone Traffic Control Award of Excellence in recognition of traffic control provided during roadway reconstruction, drainage

work, and bridge replacement on Willow Road from Illinois 43 to Interstate 94 in Northfield, Northbrook, Glenview and Winnetka.

The Illinois Tollway honored F.H. Paschen, S.N. Nielsen & Associates as their General Contractor of the Year. This award was selected by the Illinois Tollway Engineering Department's Project Managers to recognize the prime contractor demonstrating the traits they most desired: professionalism; adherence to policies and procedures; on-time project delivery; and fairness regarding Change Orders/Extra Work Orders.

Roadway Contractors of the Year were the following Interstate 90 West Mainline Contractors: Curran Contracting Company (Crystal Lake), F.H. Paschen, S.N. Nielsen & Associates (Chicago), Plote Construction Company (Hoffman Estates), R.W. Dunteman Company (Addison) and William Charles Construction (Loves Park).

The Interchange of the Year Award was given to Lorig Construction Company, of Des Plaines, for roadway widening and bridge construction for the Tri-State Tollway, Interstate 57 Interchange project.

Traffic Services, Inc., of Bartlett, won the Tollway's Work Zone Traffic Control Award for their ongoing cooperation, efficiency, and effective performance on a number of projects, including the Jane Addams Memorial Tollway and Tollway maintenance sites. Traffic Services performed without incident, proving they are committed to safety and efficiency.

CDOT's Outstanding Paving Contractor of the Year Award went to Bigane Paving Company, of Chicago, for their work on resurfacing approximately 30

miles of arterial streets at various locations in the city of Chicago.

Trice Construction Company, of Chicago, was awarded CDOT's Outstanding Minority Contractor of the Year for the Vertical Clearance Improvement project at 79th Street and Leavitt Street.

Metra honored the following members with Contractor of the Year Awards: Walsh Construction Company, of Chicago, in recognition of construction services for the Union Pacific Railroad and Metra north line bridges, retaining walls, and the Ravenswood Station Project; John Burns Construction Company, of Orland Park, for construction services for the rehabilitation of the Lombard Metra Station; and T.Y. Lin International Group, of Chicago, for engineering design services for the new Rock Island District Commuter Rail Station at Auburn Park in Chicago.

Metra's Subcontractors of the Year were S & J Construction, of Oak Forest, in recognition of structural steel erection and bridge removal, salvation services on the CREATE Project P1 (Englewood Flyover), and construction work near the Englewood interlocking; Rubinos & Mesia Engineers, Inc., of Chicago, for engineering design services and shop drawing review for the Flossmoor Station construction project; and Geo Services, Inc., of Naperville, for material inspection, testing and environmental services for the Flossmoor Station construction project.

K-Five Construction Corp., of Lemont, was awarded the Chicago Department of Aviation's Contractor of the Year Award for their work at Midway International Airport on the Runway 13-31C rehabilitation, centerline light installation, and EMAS replacement.

## STRIVE FOR SUSTAINABILITY

SOLID WASTE & RECYCLING CONFERENCE WITH TRADE SHOW  
The Sagamore on Lake George, NY



**Over 700 attendees** come to the *Strive For Sustainability Solid Waste & Recycling Conference* on Lake George because of the location, networking opportunities, and more than 75 technical sessions!

**2015**  
**MAY**  
**3RD-6TH**



### Conference Includes

- 2 ½ Days of Presentations
- Over 75 Technical Sessions
- 700 Attendees from 23 States & Canada
- Adirondack Mountain Setting w/ Luxurious Accommodations
- Comprehensive Industry Update
- Educational Trade Show
- Recreational Activities
- Networking and much more...

**REGISTER TODAY!**  
[www.nyfederation.org](http://www.nyfederation.org)



INTERESTED IN BEING AN EXHIBITOR?

Contact Matt Curley, Exhibitor, Sponsor & Advertisement Coordinator  
(518) 813-5126 or [show@nyfederation.org](mailto:show@nyfederation.org)



ClearSpan fabric structures

1.866.643.1010 | [ClearSpan.com/ADAR](http://ClearSpan.com/ADAR)

Made in the USA.

## CLEARSPAN IS YOUR PREFERRED SOLUTION FOR ALL YOUR RECYCLING NEEDS

Spacious interiors without support posts. Easy to expand and relocate.  
Cost-effective foundation solutions. Lower energy costs with natural lighting.  
Design built for conveyor systems. Low in cost per square foot.



**7-YEAR FINANCING**  
**ZERO DOWN, NO INTEREST & PAYMENTS**  
- FOR UP TO ONE FULL YEAR -

# 2002 VERMEER MODEL TG400 TUB GRINDER

230 HP CAT engine. 3,500 hours. Good operating condition and can be demonstrated.  
Multiple screen sizes included. \$92,500.



**DADE**  
Capital Corp.  
oDc

DADE Capital Corp.  
**800-823-9688**  
www.DADECapital.com



www.DADECapital.com  
Call or Click Today



**92%** of companies either finance or lease.  
*How can we help you?*

## LOAD EXPORT CONTAINERS CHEAPLY & EASILY



### TIPPER



2007 A-Ward 20' Container Tipper: Load your containeres vertically to the MAX in minutes.  
Very good condition and at a fraction of the price of new. Can be demonstrated. \$62,500.



### LOADER



**ONLY ONE LEFT!**

2010 Acculoader Container Loader: Use the Acculoader to load your containers horizontally.  
Very good condition and at a great price. Can be demonstrated. ~~\$160,000 each.~~